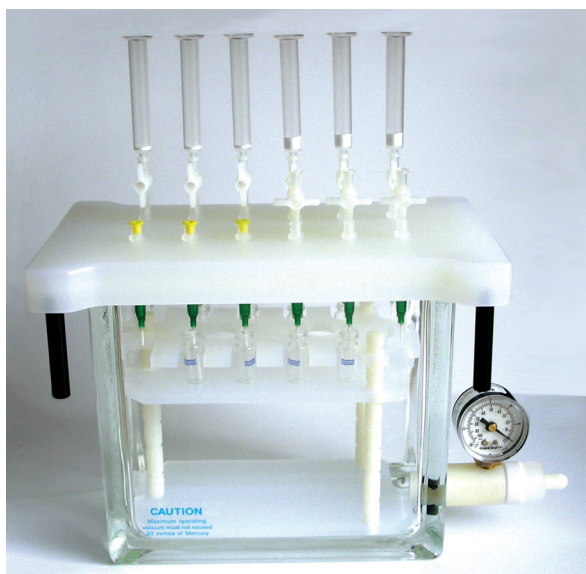


TK Vacuum Manifolds for SPE

Vacuum Manifold



Teknokroma vacuum manifolds simplify SPE sample processing. These manifolds permit consistent extraction and filtration results. Analyst can save time, since these manifolds allow simultaneous multiple sample processing.

The manifolds yield consistent extraction, elution and filtration results for up to 24 columns, cartridges or 25 mm syringe filters. Filters should not be attached to the vacuum manifold port prior to elution. Filters will air-lock and prevent fluid passage if used during column conditioning, sample application, or column wash. Using filters during the final elution step will ensure a clean sample for injection. Parallel processing of this kind greatly reduces the time required to prep multiple samples.

The manifolds consist of a clear glass chamber to which vacuum is applied to draw a sample through on SPE column, cartridge, or disk.

Adjustable racks placed in the glass vacuum chamber will accommodate a variety of sample collection vessels, including test tubes, autosamplers, vials, volumetric flasks, and Erlenmeyer flasks.

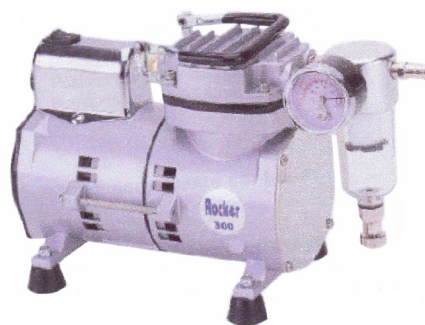
Eluants are deposited directly into the collection vessel of choice via polypropylene, optional stainless steel, or Teflon needles.

Vacuum manifolds for SPE sample preparation, filtration, and elution are available in 12, 16, and 24 port configurations.

Port Vacuum Manifold complete set include: Glass chamber, cover gasket & 12 stopcocks, vacuum valve and gauge, collections racks plates (13 mm, 16 mm tubes, volumetric flask, plate base, plate dimple, lid legs, propylene needles, retaining clips for collections racks.

Cat.No	Description
TR-004012	12 Port Vacuum Manifold, Complete Set
TR-004416	16 Port Vacuum Manifold, Complete Set
TR-004824	24 Port Vacuum Manifold, Complete Set

Vacuum Pump R-300



Vacuum Pump impulsed by serving dish, without oil, declaring the innovative silent technology and mechanics.

The R-300 is adaptable to many requirements of laboratory:

- **Slow vibration and silent**
Motor directly conducted without the mechanism of transmission and rubber feet of quality that maintain the noise level only upon approximately 50 dB.
- **Weigh compact and light**
The aluminum mold and its precise construction make the R-300 so little and compact, with a weight of only 4,1 kg.
- **Cleanliness and maintenance**
The design without oil makes the R-300 clean and free of maintenance, we guarantee the free supply of spare parts during two years of 3000 working hours (except humidity filter).

Cat.No	Description
BOVT 0300	Vacuum Pump R-300

Specifications	
Maximum vacuum	650 mm. Hg
Vacuum Velocity (2.5 L tank):	
0 mmHg:	17/min = 9.6 CFM
100 mmHg:	14 l/min = 0.49 CFM
200 mmHg:	12 l/min = 0.42 CFM
300 mmHg:	9.5 l/min = 0.34 CFM
400 mmHg:	7 l/min = 0.25 CFM
500 mmHg:	4.5 l/min = 0.16 CFM
600 mmHg:	1.5 l/min = 0.05 CFM
Maximum flow:	13 l/min
Motive rotation:	1450 rpm
Potency:	1/8 CV/HP
Poles Nbr.:	4 P
Gross weight:	5.1 kg
Net weight:	4.1 kg
Entrance screw:	1/8 PS
Noise level:	50 dB

Vacuum Manifolds Accessories **TR**

Description	12 Positions	Pk	16 Positions	Pk	24 Positions	Pk
Glass Chamber	TR-004013	1	TR-004417	1	TR-004825	1
Cover, gasket & 12 stopcocks	TR-004014	1	TR-004418	1	TR-004826	1
Gaskets	TR-004015	2	TR-004419	2	TR-004827	1
Vacuum gauge, valve & glass chamber	TR-004016	1	TR-004420	1	TR-004828	1
Needles - Polypropylene	TR-004017	12	TR-004421	12	TR-004829	12
Needles - Stainless Steel	TR-004018	12	TR-004422	12	TR-004830	12
Collection Rack-shelves, legs, chips & posts	TR-004019	1	TR-004423	1	TR-004831	1
Plate - 13 mm	TR-004020	1	TR-004424	1	TR-004832	1
Plate - volumetric flask	TR-004021	1	---	---	---	---
Plate - 16 mm test tube	TR-004022	1	TR-004426	1	TR-004834	1
Plate - autosampler vial	TR-004023	1	---	---	---	---
Plate - dimple	TR-004024	1	TR-004428	1	TR-004836	1
Plate - base	TR-004025	1	TR-004429	1	TR-004837	1
Stopcocks	TR-004026	1	TR-004430	1	TR-004838	1

Drying Attachments



Drying attachments are available for the 12 and 24 port manifolds, which will direct the flow of air or nitrogen into the collection vessels to concentrate eluants, prior to further analysis.

Drying attachments can be connected, via adapters, to SPE columns or cartridges in order to dry the column or cartridge prior to final elution.

Cat.No	Description
TR-004027	12 Positions Drying Attachment
TR-004431	16 Positions Drying Attachment
TR-004839	24 Positions Drying Attachment

Disposable polypropylene waste container



The disposable polypropylene waste container simplifies clean-up of the vacuum chamber in 12 port manifolds. The disposable waste liner is a molded solvent resistant polypropylene liner that fits into the vacuum chamber of the 12 port manifolds. The liner is designed to contain all liquids used in SPE sample preparation. To use the liner, remove the manifold lid and take out the rack and shelf set. Place the disposable liner into the glass vacuum chamber, and replace the manifold lid. Proceed with all conditioning and sample preparation steps. Just prior to final elution, the liner, containing the waste solvents, is removed from the vacuum chamber.

There are small handles at each end of the waste liner to facilitate its removal.

Replace the lid, and proceed with the final elution of the analyze. Waste solvents should be properly discarded from the liner. The liner can be cleaned and re-used a number of times, prior to discarding.

Cat.No	Description	Pk
TR-004028	12 Positions PP Vacuum Waste Container	10