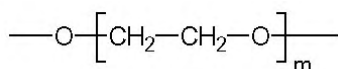


Meta.WAX 400

100% Polyethylene glycol (PEG), nonbonded phase.

- Column designed for analysis of volatiles in alcoholic beverages and solvents
- Maximum resolution of amylic alcohols
- High number of plates even at very low temperature (<20°C)

Structure of Polyethyleneglycol



Meta.WAX 400 Equivalent Phase

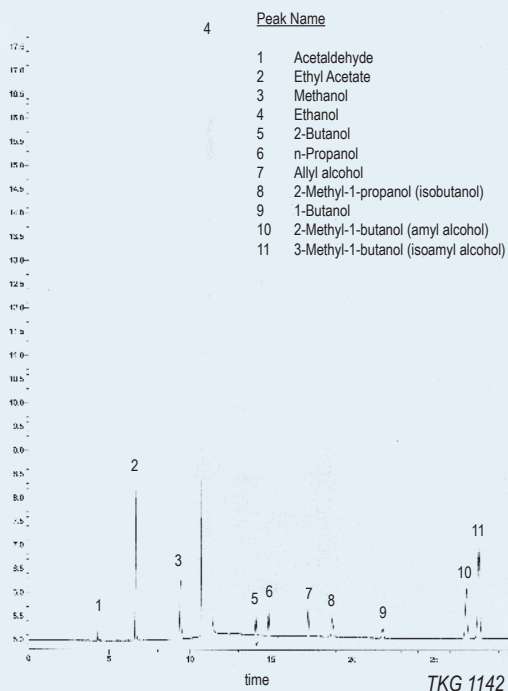
Varian: CP Carbowax 400

Meta.WAX 400

Internal Diam.(mm)	Length (m)	Film Thickness (µm)	Temp limits (°C)	Part. N°. (P/N)
0,32	50	0,20	0 to 60/80	TR-402153

Meta.WAX 400

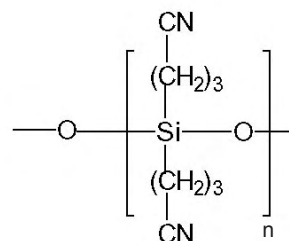
Column: **Meta.WAX 400**, P/N TR-402153
 Dimensions: 50m x 0.32mm x 0.20 µm
 Injection: 1 µL standard (split 1:50), 175°C
 Carrier gas: He, 11 psi (75.8 Kpa)
 Oven Temperature: 30°C(5 min.) @ 4°C/min to 60°C(10 min.)
 Detector Temperature: FID, 175°C



TR-CN100

(100%) Cyanopropyl polysiloxane, nonbonded phase

- 100% Cyanopropyl polysiloxane
- Column of maximum polarity
- Designed for separating fatty acids methyl esters (FAMES)
- High selectivity towards cis-trans isomers of FAMES



Structure of Poly(biscyanopropyl)siloxane

TR-CN100 Equivalent Phase

Supelco: SP-2340, SP-2380
 Restek: Rt-2330, Rt-2580
 Varian: CP-SIL 88

TR-CN100

Internal Diam.(mm)	Length (m)	Film Thickness (µm)	Temp limits (°C)	Part. N°. (P/N)
0,18	75	0,14	40 to 240/250	TR-8816H4
0,25	15	0,20	40 to 240/250	TR-882112
	30	0,20	40 to 240/250	TR-882132
	60	0,20	40 to 240/250	TR-882162
	100	0,20	40 to 240/250	TR-882192
0,32	15	0,20	40 to 240/250	TR-882113
	30	0,20	40 to 240/250	TR-882133
	60	0,20	40 to 240/250	TR-882163
0,53	15	0,20	40 to 225/250	TR-882115
	30	0,20	40 to 225/250	TR-882135
	60	0,20	40 to 225/250	TR-882165