

Meta.VOC

Proprietary Bonded and crosslinked phase.

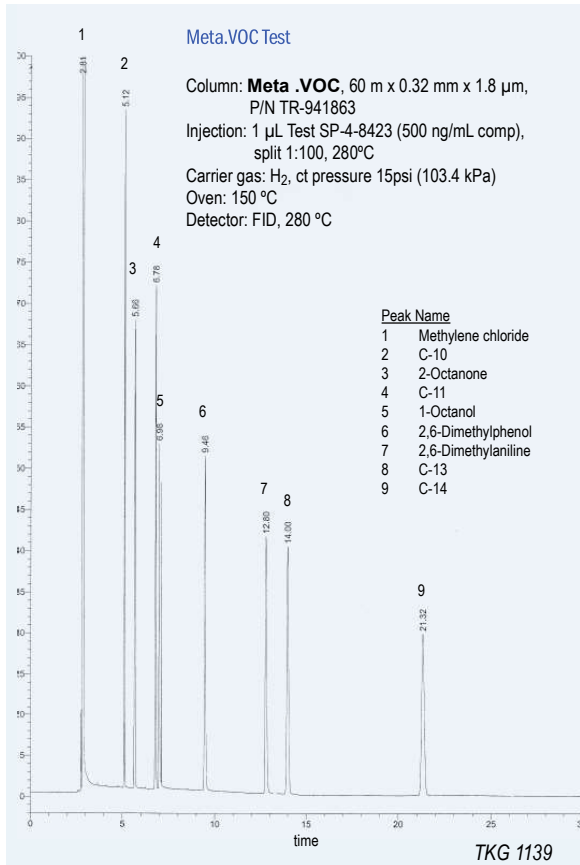
- Developed for analysis of volatile organic compounds (VOC)
- Intermediate polarity column

Meta.VOC Equivalent Phase

Agilent: DB-502.2, HP-VOC
Supelco: VOCOL
Restek: Rtx-502.2

Meta.VOC

InternalLength	Film	Temp	Part.
Diam.(mm) (m)	Thickness (µm)	limits (°C)	N°. (P/N)
0,18	20	1,00	-20 to 240/250 TR-941084
0,20	10	1,20	-20 to 240/250 TR-941249
0,25	30	1,50	-20 to 240/250 TR-941532
	60	1,50	-20 to 240/250 TR-941562
0,32	60	1,80	-20 to 240/250 TR-941863
	60	3,00	-20 to 230/240 TR-943063
0,53	30	3,00	-20 to 230/240 TR-943035
	60	3,00	-20 to 230/240 TR-943065
	105	3,00	-20 to 230/240 TR-9430K5



TRB-608

Proprietary Bonded and crosslinked phase.

- Specifically designed for analysing chlorinated pesticides and PCBs
- Designed for the EPA 508, 608 and 8080 methods.

TRB-608 Equivalent Phase

Agilent: HP-608
Supelco: SPB-608
SGE: BP-608

TRB-608

InternalLength	Film	Temp	Part.
Diam.(mm) (m)	Thickness (µm)	limits (°C)	N°. (P/N)
0,18	20	0,18	-20 to 300/310 TR-360984
0,25	30	0,25	-20 to 300/310 TR-360232
0,53	15	0,50	-20 to 290/300 TR-360515
	30	0,50	-20 to 290/300 TR-360535

