



MetaBLOOD 1 & MetaBLOOD 2

Proprietary bonded and crosslinked phases for the analyses of volatiles in blood.

- For analysis of volatile compounds in biological fluids
- Extremely low analysis time
- Possibility of utilization in dual system, as analytical or as confirmation column
- Elution order different for some compounds

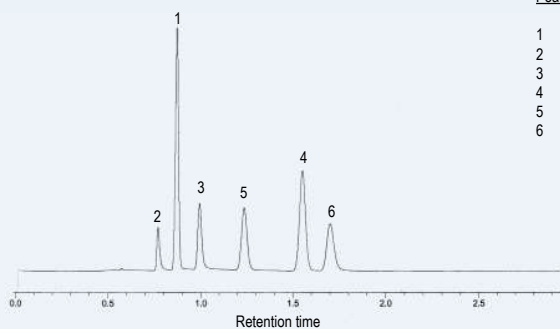
MetaBLOOD 1 and MetaBLOOD 2 Equivalent Phases

Agilent/JW: DB-ALC1, DB-ALC2

Restek: Rtx-BAC1, Rtx-BAC2

Alcohols in Blood

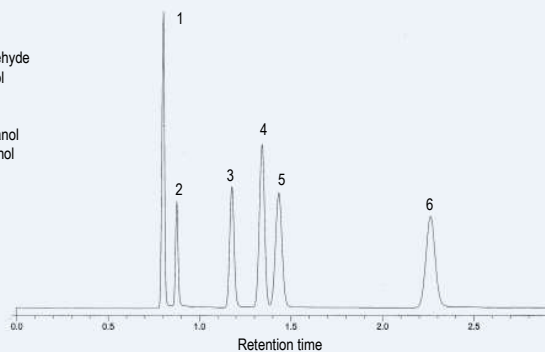
Column: **MetaBLOOD 1**, 30 m x 0.53 mm x 3.0 μ m, P/N TR-853035
 Injection: 1 mL Head Space 2t, blood alcohols mix, split 1:10, 250 $^{\circ}$ C
 Carrier gas: He, 80 cm/s (40 $^{\circ}$ C)
 Oven: 40 $^{\circ}$ C (Isothermal)
 Detector: FID, 260 $^{\circ}$ C



TKG 1198

Alcohols in Blood

Column: **MetaBLOOD 2**, 30 m x 0.53 mm x 2.0 μ m, P/N TR-862035
 Injection: 1 mL Head Space 2t, blood alcohols mix, 250 $^{\circ}$ C
 Carrier gas: He, 80 cm/s (40 $^{\circ}$ C)
 Oven: 40 $^{\circ}$ C (Isothermal)
 Detector: FID, 260 $^{\circ}$ C



TKG 1200

MetaBLOOD 1

InternalLength	Film	Temp	Part.
Diam.(mm) (m)	Thickness (μ m)	limits ($^{\circ}$ C)	N°. (P/N)
0,32	30	1.80	-20 to 240/260 TR-851833
0,53	30	3.00	-20 to 240/260 TR-853035

MetaBLOOD 2

InternalLength	Film	Temp	Part.
Diam.(mm) (m)	Thickness (μ m)	limits ($^{\circ}$ C)	N°. (P/N)
0,32	30	1.20	-20 to 240/260 TR-861233
0,53	30	2.00	-20 to 240/260 TR-862035