









# NeoNat SCID SMA

---

## REAL TIME PCR KIT

The NeoNat SCID SMA is a Real-Time PCR assay for screening Severe Combined Immunodeficiency (SCID) Syndrome and Spinal Muscular Atrophy (SMA) in newborns DNA from Dried Blood Spot (DBS) samples.

-  Greater flexibility with separate multiplexing of SCID and SMA from one kit
-  Kit contains all the reagents and components to perform DNA extraction from DBS
-  Ready to use reaction mix and calibrators preloaded plates enable convenience for users
-  Four levels of DBS controls with defined target gene copies per  $\mu\text{L}$
-  Compatible with multiple qPCR instruments
-  Short turnaround time of ~120 mins from DNA extraction to result analysis



## Assay Description

- NeoNat SCID SMA Real time PCR kit is based on 5' nuclease technique
- Screens T-cell receptor excision circle (TREC) / Kappa deleting recombination excision circle (KREC) for SCID and Survival Motor Neuron 1 (SMN1) & Survival Motor Neuron 2 (SMN2) for SMA. The  $\beta$ -globin gene serves as an internal control



## Performance

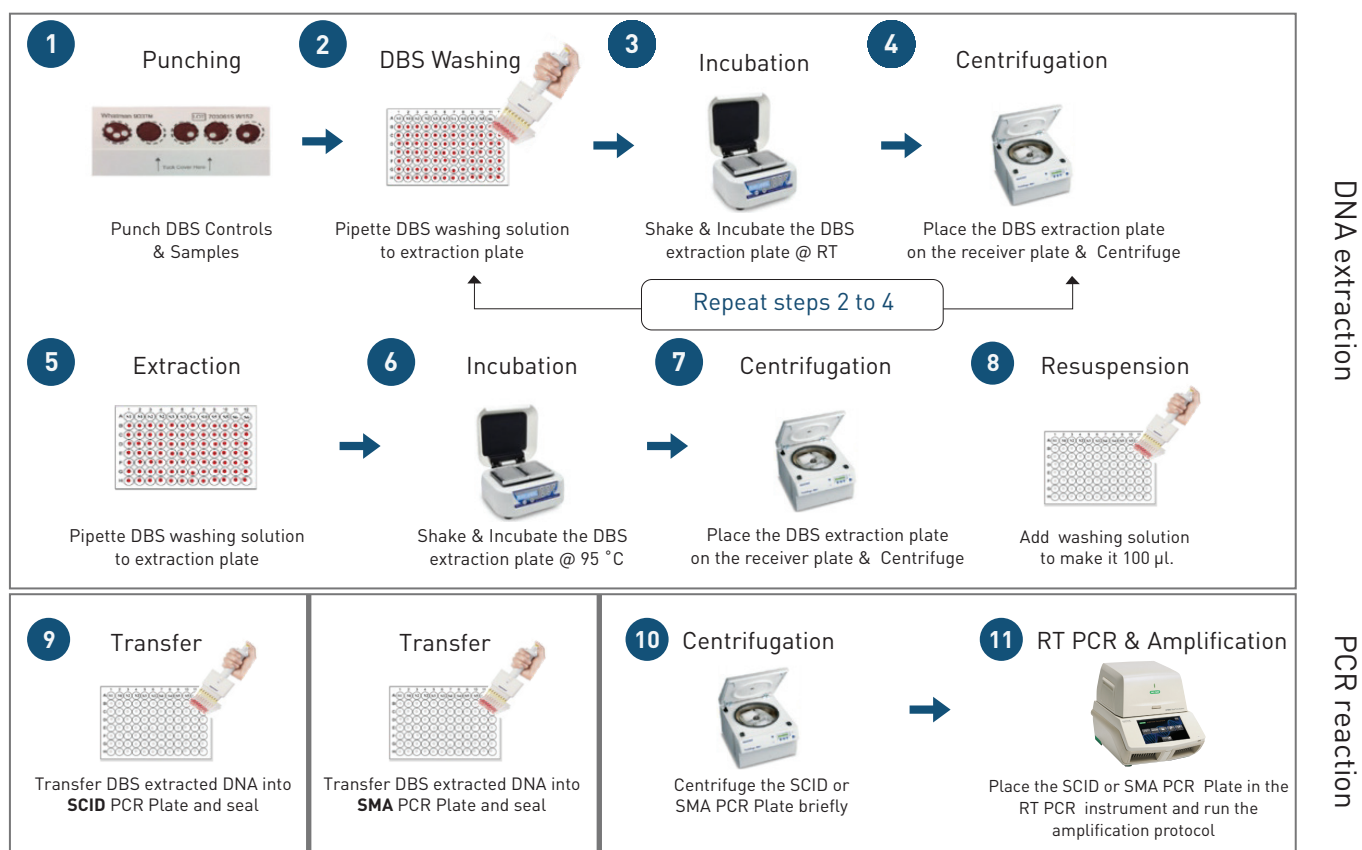
- The assay demonstrates excellent performance with 100% sensitivity and specificity for all the samples tested
- The analytical sensitivity shows a limit of detection of <5.0 copies/ $\mu$ L for TREC & KREC and <2.5 copies/ $\mu$ L for SMN1 & SMN2



## Compatibility

- Kit compatible with most real-time PCR instruments in the market with at least three measurement channels (FAM, VIC/or HEX, & CY5)
- Developed and validated with Biorad CFX 96 and Thermofisher Quantstudio 5 & 6.

### DNA EXTRACTION FROM DBS & PCR REACTION



## Ordering Information

96 Reactions	8100481
192 Reactions*	8100482
480 Reactions*	8100483

\*Please check the availability

**For more information please order your IFU from  
LabSystems Diagnostics Oy**

Tiilitie 3, FI-01720 VANTAA, Finland Tel: +358 (0) 20 155 7530  
sales@labsystemsdx.com | www.labsystemsdx.com