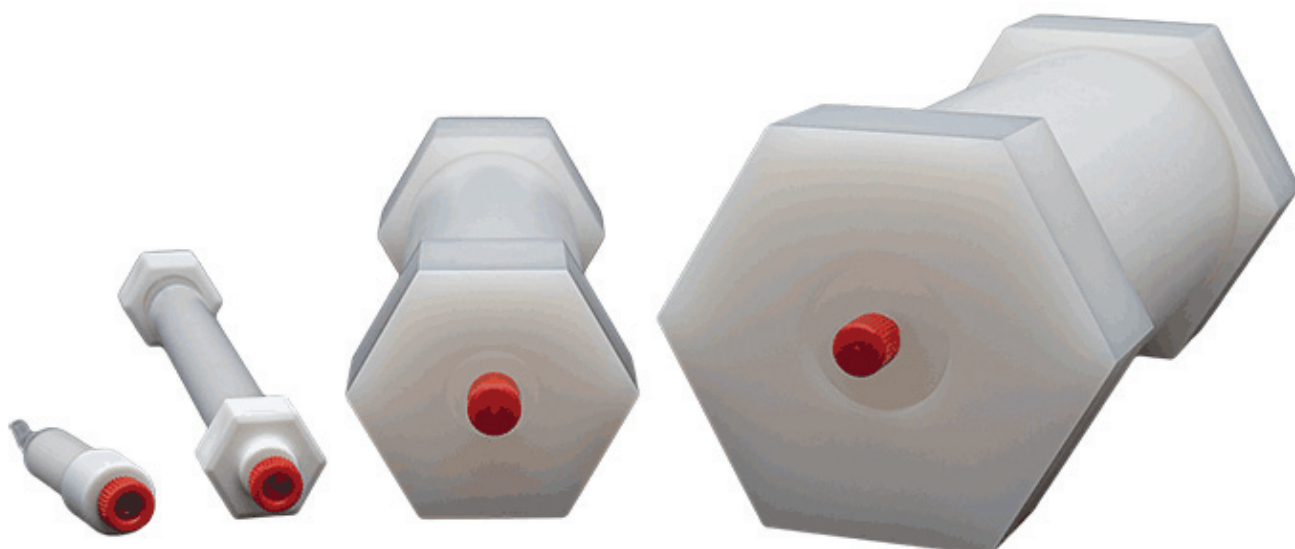


# Columnas SkillPak™ preempaquetadas

Kits y Columnas  
para la Evaluación Rápida de Biomoléculas  
Anticuerpos monoclonales, Proteínas  
y Oligonucleótidos



**Desarrollo Rápido de Métodos**

**Selección de Resinas**

**Concentración de Muestras**

**Purificación y separación de biomoléculas**

**Desde plataformas de diseño a planta piloto**

**Utilizables con cromatógrafos LPLC o MPLC**

**Exclusión Molecular**

**Intercambio Iónico**

**Interacción Hidrofóbica**

**Afinidad**

**Hidroxiapatito**

**Modo Mixto**

## TOSOH BIOSCIENCE

# Selección Skillpack 1mL

## Part # Description

### Cromatografía de Afinidad

- TH-45200 SkillPak TOYOPEARL AF-rProtein L-650F 1 mL column
- TH-45221 SkillPak TOYOPEARL AF-rProtein L-650F 1 mL columns (qty. 5)
- TH-45201 SkillPak TOYOPEARL AF-rProtein A HC-650F 1 mL column
- TH-45222 SkillPak TOYOPEARL AF-rProtein A HC-650F 1 mL columns (qty. 5)
- TH-45202 SkillPak TOYOPEARL AF-Chelate-650M 1 mL column

### Cromatografía de Intercambio Iónico

- TH-45203 SkillPak TOYOPEARL GigaCap Q-650M 1 mL columns (qty. 5)
- TH-45204 SkillPak TOYOPEARL GigaCap S-650S 1 mL columns (qty. 5)
- TH-45205 SkillPak TOYOPEARL Sulfate-650F 1 mL columns (qty. 5)
- TH-45206 SkillPak TOYOPEARL SuperQ-650S 1 mL columns (qty. 5)
- TH-45207 SkillPak TSKgel SP-5PW (20) 1 mL columns (qty. 5)
- TH-45208 SkillPak TSKgel SuperQ-5PW (20) 1 mL columns (qty. 5)
- TH-45209 SkillPak TOYOPEARL NH2-750F 1 mL columns (qty. 5)
- TH-45210 SkillPak TOYOPEARL GigaCap DEAE-650M 1 mL columns (qty. 5)
- TH-45211 SkillPak TOYOPEARL GigaCap CM-650M 1 mL columns (qty. 5)
- TH-45212 SkillPak TOYOPEARL QAE-550C 1 mL columns (qty. 5)
- TH-45213 SkillPak TOYOPEARL SP-550C 1 mL columns (qty. 5)

### Cromatografía de Interacción Hidrofóbica

- TH-45214 SkillPak TOYOPEARL Butyl-600M 1 mL columns (qty. 5)
- TH-45215 SkillPak TOYOPEARL Butyl-650M 1 mL columns (qty. 5)
- TH-45216 SkillPak TOYOPEARL Phenyl-600M 1 mL columns (qty. 5)
- TH-45217 SkillPak TOYOPEARL Phenyl-650M 1 mL columns (qty. 5)
- TH-45218 SkillPak TOYOPEARL PPG-600M 1 mL columns (qty. 5)
- TH-45219 SkillPak TOYOPEARL Hexyl-650C 1 mL columns (qty. 5)
- TH-45220 SkillPak TOYOPEARL Ether-650M 1 mL columns (qty. 5)

### Cromatografía de Modo Mixto

- TH-45224 SkillPak TOYOPEARL MX-Trp-650M 1 mL columns (qty. 5)

### Cromatografía de Exclusión por Tamaño

- TH-45223 SkillPak TOYOPEARL HW-40F 1 mL columns (qty. 5)

### Cromatografía de Hidroxiapatito

- TH-45225 SkillPak Ca<sup>++</sup>Pure-HA 1 mL column

### Librerías de Columnas

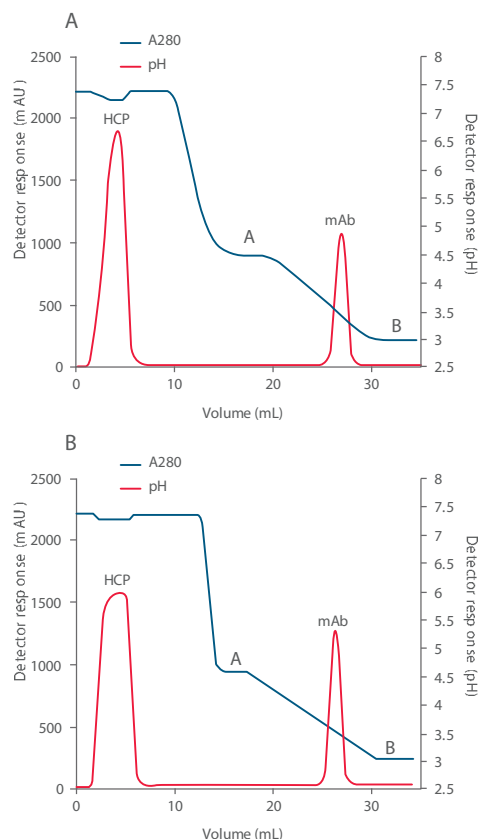
- TH-45226 SkillPak Anion Exchange 1 mL column library, 1 mL × 2 each (TOYOPEARL GigaCap Q-650M, GigaCap DEAE-650M, NH2-750F)
- TH-45227 SkillPak Cation Exchange 1 mL column library, 1 mL × 2 each (TOYOPEARL GigaCap S-650S, GigaCap CM-650M, Sulfate-650F)
- TH-45228 SkillPak Antibody 1 mL column library, 1 mL × 1 each (TOYOPEARL AF-rProtein A HC-650F, AF-rProtein L-650F, NH2-750F, Sulfate-650F, GigaCap Q-650M, GigaCap S-650S)
- TH-45229 SkillPak mAb Platform 1 mL column library, 1 mL × 2 each (TOYOPEARL AF-rProtein A HC-650F, Sulfate-650F, NH2-750F)
- TH-45230 SkillPak Salt Tolerant 1 mL column library, 1 mL × 3 each (TOYOPEARL Sulfate-650F, NH2-750F)
- TH-45231 SkillPak Mixed Mode 1 mL column library, 1 mL × 3 each (Ca<sup>++</sup>Pure-HA, TOYOPEARL MX-Trp-650M)
- TH-45232 SkillPak Best-in-Class 1 mL column library, 1 mL × 1 each (Ca<sup>++</sup>Pure-HA, TOYOPEARL AF-rProtein A HC-650F, AF-rProtein L-650F, NH2-750F, Sulfate-650F)
- TH-45233 SkillPak HIC 1 mL column library, 1 mL × 1 each (TOYOPEARL Butyl-650M, Phenyl-650M, PPG-600M, Hexyl-650C, Ether-650M)
- TH-45236 SkillPak HIC 1 mL column library, 1 mL × 2 each (TOYOPEARL Butyl-600M, Phenyl-600M, PPG-600M)



### ESPECIFICACIONES DE LAS COLUMNAS SkillPak 1 mL

Dimensiones de Columna	7 mm ID × 2.5 cm altura de lecho
Volumen	1 mL
Flujo máximo	4 mL/min (600 cm/hr)
Presión de Trabajo Máxima	0.3 MPa
Conexiones con roscas estándar	(10-32 para 1/16" Capilar)
Tampón de Envío	20% etanol para TOYOPEARL y TSKgel [con la excepción de 0.5 mol/L de citrato sódico con 20% etanol para TSKgel SP-5PW (20) y SuperQ-5PW (20)], 20 mmol/L fosfato sódico con 20% etanol para Ca <sup>++</sup> Pure-HA

ELUCIÓN POR CAMBIO DE pH de mAb usando la columna SkillPak 1 mL TOYOPEARL AF-rProtein A HC-650F (PANEL A); Columna SkillPak 5 mL TOYOPEARL AF-rProtein A HC-650F (PANEL B)



# Selección Skillpack 5mL

Part # Description

## Cromatografía de Afinidad

TH-45257 SkillPak TOYOPEARL AF-rProtein L-650F 5 mL column  
 TH-45258 SkillPak TOYOPEARL AF-rProtein A HC-650F 5 mL column  
 TH-45259 SkillPak TOYOPEARL AF-Chelate-650M 5 mL column

## Cromatografía de Intercambio Iónico

TH-45239 SkillPak TOYOPEARL GigaCap Q-650M 5 mL column  
 TH-45240 SkillPak TOYOPEARL GigaCap S-650S 5 mL column  
 TH-45241 SkillPak TOYOPEARL Sulfate-650F 5 mL column  
 TH-45242 SkillPak TOYOPEARL SuperQ-650S 5 mL column  
 TH-45243 SkillPak TSKgel SP-5PW (20) 5 mL column  
 TH-45244 SkillPak TSKgel SuperQ-5PW (20) 5 mL column  
 TH-45245 SkillPak TOYOPEARL NH2-750F 5 mL column  
 TH-45246 SkillPak TOYOPEARL GigaCap DEAE-650M 5 mL column  
 TH-45247 SkillPak TOYOPEARL GigaCap CM-650M 5 mL column  
 TH-45248 SkillPak TOYOPEARL QAE-550C 5 mL column  
 TH-45249 SkillPak TOYOPEARL SP-550C 5 mL column

## Cromatografía de Interacción Hidrofóbica

TH-45250 SkillPak TOYOPEARL Butyl-600M 5 mL column  
 TH-45251 SkillPak TOYOPEARL Butyl-650M 5 mL column  
 TH-45252 SkillPak TOYOPEARL Phenyl-600M 5 mL column  
 TH-45253 SkillPak TOYOPEARL Phenyl-650M 5 mL column  
 TH-45254 SkillPak TOYOPEARL PPG-600M 5 mL column  
 TH-45255 SkillPak TOYOPEARL Hexyl-650C 5 mL column  
 TH-45256 SkillPak TOYOPEARL Ether-650M 5 mL column

## Cromatografía de Modo Mixto

TH-45261 SkillPak TOYOPEARL MX-Trp-650M 5 mL column

## Cromatografía de Exclusión por Tamaño

TH-45260 SkillPak TOYOPEARL HW-40F 5 mL column

## Cromatografía de Hidroxiapatito

TH-45262 SkillPak Ca++ Pure-HA 5 mL column

## Librerías de Columnas

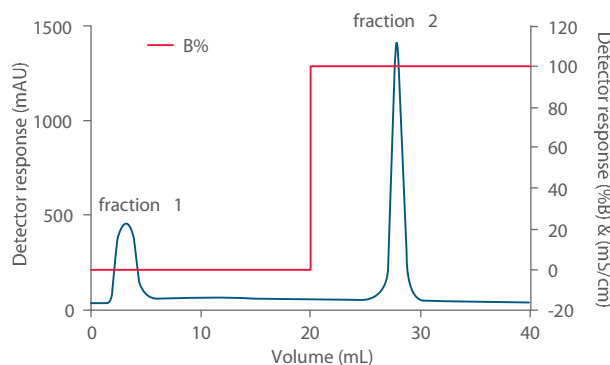
TH-45263 SkillPak mAb Platform 5 mL column library, 5 mL x 1 each  
 (TOYOPEARL AF-rProtein A HC-650F, Sulfate-650F, NH2-750F)  
 TH-45264 SkillPak Salt Tolerant 5 mL column library, 5 mL x 1 each  
 (TOYOPEARL Sulfate-650F, NH2-750F)  
 TH-45265 SkillPak Mixed Mode 5 mL column library, 5 mL x 1 each  
 (Ca<sup>++</sup>Pure-HA, TOYOPEARL MX-Trp-650M)  
 TH-45266 SkillPak Best-in-Class 5 mL column library, 5 mL x 1 each  
 (Ca<sup>++</sup>Pure-HA, TOYOPEARL AF-rProtein A HC-650F, AF-rProtein L-650F,  
 NH<sub>2</sub>-750F, Sulfate-650F)



## ESPECIFICACIONES DE LAS COLUMNAS SkillPak 5 mL

Dimensiones de Columna	8 mm ID x 10 cm altura de lecho
Volumen	5 mL
Flujo estándar	1.3 mL/min (150 cm/hr)
Flujo Máximo	5 mL/min (600 cm/hr) para TOYOPEARL M Y resinas de grado C; 2.5 mL/min (300 cm/hr) para TSKgel, Ca <sup>++</sup> Pure-HA y TOYOPEARL S- y resinas de grado F, incluido TOYOPEARL AF-rProtein A HC-650F y TOYOPEARL AF-rProtein L-650F
Presión de Trabajo Máxima	0.3 MPa para resinas TOYOPEARL, ≤ 0.4 MPa Para resinas TSKgel y Ca <sup>++</sup> Pure-HA
Conexiones con roscas estándar	(10-32 para 1/16" Capilar)
Tampón de Envío	20% etanol para TOYOPEARL y TSKgel 20 mmol/L fosfato sódico con 20% etanol para Ca <sup>++</sup> Pure-HA
Factor de Asimetría (As)	0.8-1.04 para TOYOPEARL y TSKgel, 0.8-2.6 para Ca <sup>++</sup> Pure-HA

## CAPTURA DE Fab USANDO LA COLUMNA SkillPak 1 mL TOYOPEARL AF-rProtein L-650F



Column: SkillPak 1 mL TOYOPEARL AF-rProtein L-650F  
 Flow rate: 0.5 mL/min  
 Mobile phase: A: 0.1 mol/L citrate buffer, pH 6.5  
 B: 0.1 mol/L citrate buffer, pH 2.2  
 Detection: UV @ 280 nm  
 Sample: papain-digested human IgG1

# Selección Skillpack 50 & 200 ml

Part # Description

## Cromatografía de Afinidad

- TH-45338 SkillPak 50 TOYOPEARL AF-rProtein A HC-650F 50 ml
- TH-45340 SkillPak 50 TOYOPEARL AF-rProtein L-650F 50 ml
- TH-45342 SkillPak 50 TOYOPEARL AF-Chelate-650M 50 ml

## Cromatografía de Intercambio Iónico

- TH-45302 SkillPak 50 TSKgel SuperQ-5PW (20) 50ml
- TH-45304 SkillPak 50 TOYOPEARL SuperQ-650S 50 ml
- TH-45306 SkillPak 50 TOYOPEARL GigaCap Q-650M 50 ml
- TH-45308 SkillPak 50 TOYOPEARL GigaCap DEAE-650M 50 ml
- TH-45310 SkillPak 50 TOYOPEARL NH2-750F 50ml
- TH-45312 SkillPak 50 TOYOPEARL QAE-550C 50 ml
- TH-45314 SkillPak 50 TOYOPEARL GigaCap S-650S 50 ml
- TH-45316 SkillPak 50 TSKgel SP-5PW (20) 50 ml
- TH-45318 SkillPak 50 TOYOPEARL Sulfate-650F 50 ml
- TH-45320 SkillPak 50 TOYOPEARL GigaCap CM-650M 50 ml
- TH-45322 SkillPak 50 TOYOPEARL SP-550C 50 ml



## Cromatografía de Interacción Hidrofóbica

- TH-45324 SkillPak 50 TOYOPEARL PPG-600M 50 ml
- TH-45326 SkillPak 50 TOYOPEARL Butyl-600M 50 ml
- TH-45328 SkillPak 50 TOYOPEARL Butyl-650M 50 ml
- TH-45330 SkillPak 50 TOYOPEARL Hexyl-650C 50 ml
- TH-45332 SkillPak 50 TOYOPEARL Phenyl-600M 50 ml
- TH-45334 SkillPak 50 TOYOPEARL Phenyl-650M 50 ml
- TH-45336 SkillPak 50 TOYOPEARL Ether-650M 50 ml

## Cromatografía de Modo Mixto

- TH-45344 SkillPak 50 TOYOPEARL MX-Trp-650M 50 ml

## Cromatografía de Exclusión por Tamaño

- TH-45300 SkillPak 50 TOYOPEARL HW-40F 50 ml

Part # Description

## Cromatografía de Afinidad

- TH-45339 SkillPak 200 TOYOPEARL AF-rProtein A HC-650F 200 ml
- TH-45341 SkillPak 200 TOYOPEARL AF-rProtein L-650F 200 ml
- TH-45343 SkillPak 200 TOYOPEARL AF-Chelate-650M 200 ml

## Cromatografía de Intercambio Iónico

- TH-45303 SkillPak 200 TSKgel SuperQ-5PW (20) 200 ml
- TH-45305 SkillPak 200 TOYOPEARL SuperQ-650S 200 ml
- TH-45307 SkillPak 200 TOYOPEARL GigaCap Q-650M 200 ml
- TH-45309 SkillPak 200 TOYOPEARL GigaCap DEAE-650M 200 ml
- TH-45311 SkillPak 200 TOYOPEARL NH2-750F 200 ml
- TH-45313 SkillPak 200 TOYOPEARL QAE-550C 200 ml
- TH-45315 SkillPak 200 TOYOPEARL GigaCap S-650S 200 ml
- TH-45317 SkillPak 200 TSKgel SP-5PW (20) 200 ml
- TH-45319 SkillPak 200 TOYOPEARL Sulfate-650F 200 ml
- TH-45321 SkillPak 200 TOYOPEARL GigaCap CM-650M 200 ml
- TH-45323 SkillPak 200 TOYOPEARL SP-550C 200 ml

## Cromatografía de Interacción Hidrofóbica

- TH-45325 SkillPak 200 TOYOPEARL PPG-600M 200 ml
- TH-45327 SkillPak 200 TOYOPEARL Butyl-600M 200 ml
- TH-45329 SkillPak 200 TOYOPEARL Butyl-650M 200 ml
- TH-45331 SkillPak 200 TOYOPEARL Hexyl-650C 200 ml
- TH-45333 SkillPak 200 TOYOPEARL Phenyl-600M 200 ml
- TH-45335 SkillPak 200 TOYOPEARL Phenyl-650M 200 ml
- TH-45337 SkillPak 200 TOYOPEARL Ether-650M 200 ml

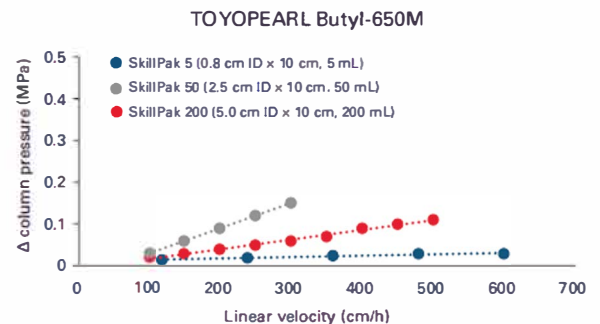
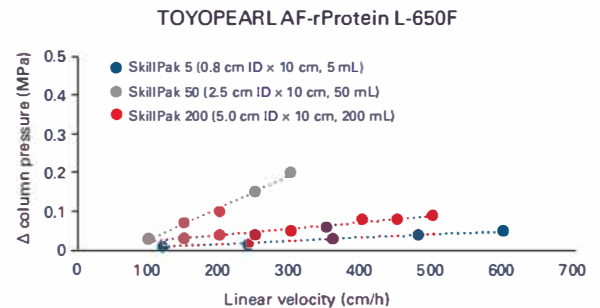
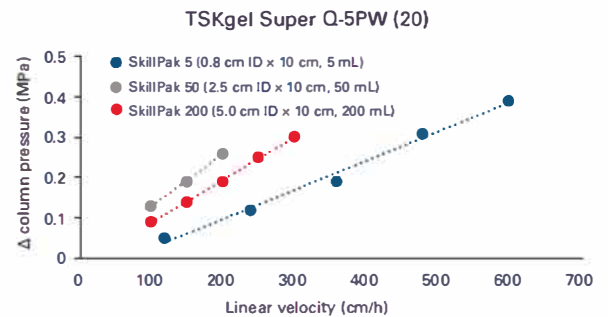
## Cromatografía de Modo Mixto

- TH-45345 SkillPak 200 TOYOPEARL MX-Trp-650M 200 ml

## Cromatografía de Exclusión por Tamaño

- TH-45301 SkillPak 200 TOYOPEARL HW-40F 200 ml

Packing performance data for SkillPak columns





# PROCESS MEDIA - FIND YOUR BEST FIT!

TOYOPEARL<sup>®</sup>, TSKgel<sup>®</sup>, and CA<sup>++</sup>PURE-HA<sup>®</sup> Chromatography Resins

Biomolecules are purified by a succession of chromatography steps. Each step uses a different mode of separation, based on specific interactions between the biomolecules and the packing material.

The various modes are based on specific physical, chemical, or biological features of the target or sample, like size, charge, hydrophobicity, function or specific content of the molecule.

TOSOH BIOSCIENCE offers a comprehensive line of media and pre-packed columns for all modes of liquid chromatography - affinity, ion-exchange, mixed-mode, hydrophobic, hydroxyapatite, and size exclusion.

## AFC Affinity Chromatography

**AF-rProtein A HC-650F** binds to the Fc part of antibodies. It allows for increased productivity and reduced production costs. IgG DBCs over 100 g/L can even be observed at higher titers. This prevents DSP bottlenecks even at short residence times.

**AF-rProtein L-650F** binds to the Kappa-light chain of antibodies and antibody derivatives. It excels all other commercially available protein L media with regards to binding capacity and robustness. It is especially suited for the purification of new antibody formats such as antibody fragments, single chain variable fragments, domain antibodies and immunoglobulin types that cannot be purified with Protein A media.

Antibody AFC resins	Min. static capacity (mAb)	Special feature
<b>PROTEIN A</b>		
AF-rProtein A HC-650F	68 g/L	Highest binding capacity
AF-rProtein A-650F	45 g/L	Fast flow rates
<b>PROTEIN L</b>		
AF-rProtein L-650F	64 g/L	Highest binding for non-standard mAb formats
<b>Other AFC resins</b>		
GROUP SPECIFIC	ACTIVATED RESINS*	REACTIVE RESINS*
AF-Chelate-650M	AF-Tresyl-650M	AF-Formyl-650M
AF-Red-650M	AF-Epoxy-650M	AF-Amino-650M
AF-Heparin HC-650M	AF-Carboxy-650M	

\* Activated and reactive resins are used to couple your ligand of choice.

## HIC Hydrophobic Interaction Chromatography

The large choice of pore and particle sizes for TOYOPEARL and TSKgel HIC resins gives the possibility to screen for the resin offering at the same time the highest binding capacity, the highest recovery, and the highest selectivity.

**PPG-600M** is specially well suited for the purification of antibodies and antibody-drug conjugates.

HIC resins	Typical capacity (g/L) Lysozyme (L) or mAb (A)	Special feature Target molecules
Ether-650 (S, M)	20 (L)	Very hydrophobic proteins
PPG-600M	30 (A)	Antibodies and ADCs
Phenyl-600M	50 (A)	Antibodies
Phenyl-650 (S, M, C)	30 (A)	Recombinant proteins
SuperButyl-550C	40 (L)	Recombinant proteins
Butyl-600M	50 (A)	Antibodies
Butyl-650 (S, M, C)	40 (L)	Recombinant proteins
Hexyl-650C	40 (L)	Hydrophilic proteins
Ether-5PW (20, 30)	20 (L)	Very hydrophobic proteins
Phenyl-5PW (20, 30)	20 (L)	Highest resolution

## WHAT'S IN A NAME?

### 1. Resin types

Tosoh Bioscience offers three base beads: TOYOPEARL, TSKgel, and Ca<sup>++</sup>Pure-HA.

TOYOPEARL and TSKgel products are hydroxylated methacrylic polymer resins and are offered in many different pore sizes and particle diameters. The key differences between the two types are particle size availability, degree of crosslinking, dynamic binding capacity, and operating pressures.

Since similarly functionalized TOYOPEARL and TSKgel resins have the same backbone polymer chemistry, the selectivity remains the same when scaling up or down.

Unlike all other TOYOPEARL and TSKgel products, Ca<sup>++</sup>Pure-HA is a hydroxyapatite resin. Ca<sup>++</sup>Pure-HA is a spherical, macroporous form of the hexagonal crystalline structure of Ca<sub>5</sub>(PO<sub>4</sub>)<sub>3</sub>(OH)<sub>2</sub>.

## MXC Mixed Mode Chromatography

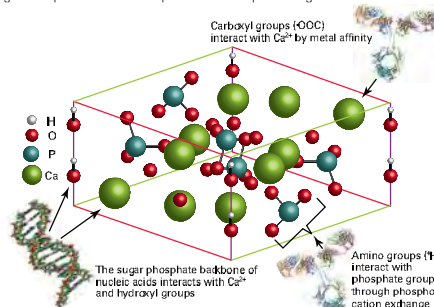
**MX-Trp-650M** is a multimodal resin with unique selectivity and high recovery. Its ligands have both ionic and hydrophobic groups. This unique ligand allows the separation of acidic, basic, and neutral proteins by one resin. It provides high binding capacity and outstanding selectivity for mAbs and mAb aggregates.

MXC resins	Typical capacity (mAb)	Recovery (mAb)
MX-Trp-650M	95 g/L	97 %



## HA Hydroxyapatite

Ca<sup>++</sup>Pure-HA provides exceptional separation properties and unequalled selectivity and resolution for multiple classes of biomolecules. The robust nature of Ca<sup>++</sup>Pure-HA offers the flexibility to use this resin at any stage in a process from capture to final polishing.



HA resin	Typical capacity (human IgG)
Ca <sup>++</sup> Pure-HA	> 30 g/L (2 min residence time)

## IEC Ion Exchange Chromatography

**Sulfate-650F** is a highly selective, salt tolerant and high capacity cation exchange resin for the capture and intermediate polishing of biomolecules. It offers the ability to use mobile phases at physiological conditions without any loss of capacity or selectivity.

**NH2-750F** is a salt-tolerant anion-exchange resin, working both in flow-through and bind/elute mode. It is ideal for removing impurities from target proteins without dilution, or for intermediate or final purification of monoclonal antibodies. One of its major benefits is the possibility to remove aggregates as well as endotoxins, HCPs, viruses and DNA in a single step.

**SuperQ-5PW (20)** is the industry standard for the purification of oligonucleotides.

IEC resins	Typical capacity (g/L resin)				Special feature Target molecules
	BSA	Lysozyme	mAb	Insulin	
<b>STRONG ANION EXCHANGERS</b>					
NH2-750F		70			Salt-tolerant
GigaCap Q-650 (S, M)	150	110			Highest capacity
SuperQ-650 (S, M, C)	145	15			Proteins <50 kDa
Q-600C AR	110	90			Alkaline stability
QAE-550C	50	30			Capturing of small proteins
SuperQ-5PW (20, 30)					Oligonucleotides
<b>WEAK ANION EXCHANGERS</b>					
GigaCap DEAE-650M					Blood products and nucleic acids. GigaCap - highest capacity
DEAE-650 (S, M, C)	25	30			
DEAE-5PW (20, 30)					

<b>STRONG CATION EXCHANGERS</b>					
Sulfate-650F			115		Salt-tolerant
GigaCap S-650 (S, M)	200	150	140		Highest capacity
SP-650 (S, M, C)	40	10	50		Cost efficient
SP-550C	100	15	80		Capturing of small proteins
MegaCap II SP-550EC	70		90		Insulin capturing
SP-3PW (30)			65		Insulin polishing
SP-5PW (20, 30)			30		Highest resolution
<b>WEAK CATION EXCHANGERS</b>					
GigaCap CM-650M	35	100			Highest capacity
CM-650 (S, M, C)	35				Cost efficient

## SEC Size Exclusion Chromatography

All TOYOPEARL resins are based on the polymeric HW-type beads. Their rigid polymeric backbone has better pressure-flow properties than most other commercially made materials. The base resins are stable over the pH 2-12 range for operating conditions and pH 1-13 for cleaning conditions.

SEC resins	Pore size	Target molecules
HW-40 (S, F, C)	5 nm	Separation of low MW compounds / buffer exchange
HW-50 (S, F)	12.5 nm	Peptide fragments
HW-55 (S, F)	50 nm	Proteins and antibodies
HW-65 (S, F, C)	100 nm	
HW-75 (F)	> 100 nm	Large nucleic acids, viruses and plasmid DNA

### 2. Particle sizes

Grade	TOYOPEARL	GigaCap	TSKgel	Ca <sup>++</sup> Pure-HA
EC	200 µm			
C	100 µm (SEC are 75 µm)			
M	65 µm (MX-Trp is 75 µm)	75 µm		
F	45 µm			
S	35 µm (SEC are 30 µm)	35 µm		
(30)			30 µm	
(20)			20 µm	
HA				38 µm

### 3. Pore sizes of base media for AFC, MXC, IEC, and HIC

TOYOPEARL 550 resins	HW-55 base resin	50 nm
TOYOPEARL 600 resins	HW-60 base resin	75 nm
TOYOPEARL 650 resins	HW-65 base resin	100 nm
TOYOPEARL 750 resins	HW-75 base resin	> 100 nm
TSKgel 3PW resin	PW-3000 base resin	25 nm
TSKgel 5PW resin	PW-5000 base resin	100 nm