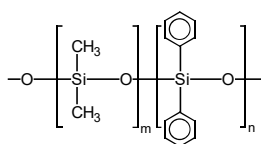


TRB-5AMINE

95% Dimethyl- 5% diphenylpolysiloxane, bonded and crosslinked phase.

- Column specially designed for the analysis of amines
- Basic deactivation of the column surface with reagents synthesized in our laboratories, that jointly with the crosslinking method have permitted the minimization of the absorption level and tailing of basic compounds, like the alkylamines, alcoholamines, basic pharmaceuticals, aromatic amines, etc.
- Selectivity and thermal stability equivalent to the TRB-5 columns



Structure of Poly (dimethyldiphenyl) siloxane

TRB-5AMINE Equivalent Phase

Restek: Rtx-5Amine

Supelco: PTA-5

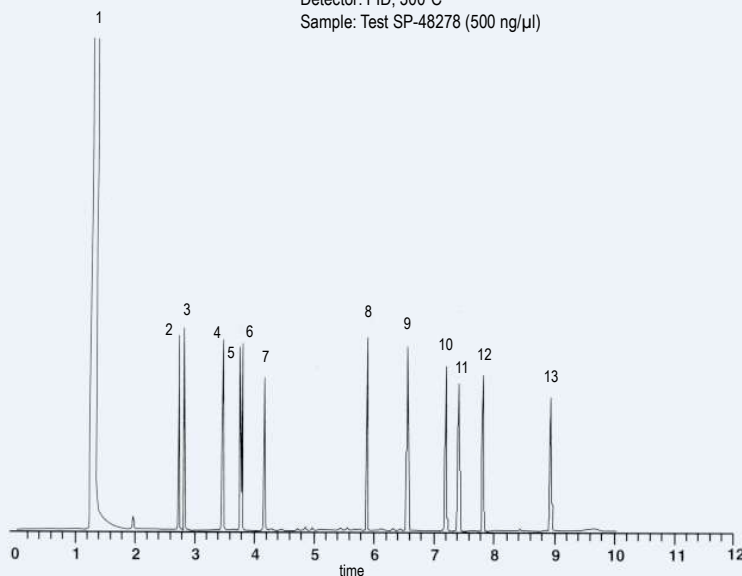
Macherey-Nagel: OPTIMA-5A

TRB-5AMINE

Diam. (mm)	Internal Length (m)		Film Thickness (µm)	Temp limits (°C)	Part. N°. (P/N)	
	0,25	0,50				
0,25	15	0,50	0,50	-60 to 300/315	TR-210512	
	15	1,00	1,00	-60 to 300/315	TR-211012	
	30	0,50	0,50	-60 to 300/315	TR-210532	
	30	1,00	1,00	-60 to 300/315	TR-211032	
	60	0,50	0,50	-60 to 300/315	TR-210562	
	60	1,00	1,00	-60 to 300/315	TR-211062	
0,32	15	0,50	0,50	-60 to 300/315	TR-210513	
	15	1,00	1,00	-60 to 300/315	TR-211013	
	15	1,50	1,50	-60 to 290/305	TR-211513	
	30	0,50	0,50	-60 to 300/315	TR-210533	
	30	1,00	1,00	-60 to 300/315	TR-211033	
	30	1,50	1,50	-60 to 290/305	TR-211533	
	60	0,50	0,50	-60 to 300/315	TR-210563	
	60	1,00	1,00	-60 to 300/315	TR-211063	
	60	1,50	1,50	-60 to 290/305	TR-211563	
	0,53	15	1,00	1,00	-60 to 290/305	TR-211015
		15	3,00	3,00	-60 to 280/295	TR-213015
		30	1,00	1,00	-60 to 290/305	TR-211035
30		3,00	3,00	-60 to 280/295	TR-213035	
60		1,00	1,00	-60 to 290/305	TR-211065	
60		3,00	3,00	-60 to 280/295	TR-213065	

Amines Test

Column: **TRB-5AMINE**, 30 m x 0.25 mm x 0.50 µm , P/N TR-210532
 Injection: 1 µL (split 1:50), 280°C
 Carrier gas: H₂, 12 psi (87.7 kPa)
 Oven: 100°C to 280°C (5 min) @ 20 °C/min
 Detector: FID, 300°C
 Sample: Test SP-48278 (500 ng/µl)



Peak Name

- 1 Methyl tert-butyl ether
- 2 Benzylamine
- 3 n-Octylamine
- 4 n-Nonylamine
- 5 2,4-Dimethylaniline
- 6 2,6-Dimethylaniline
- 7 n-Decylamine
- 8 C-15
- 9 C-16
- 10 C-17
- 11 Tri-n-hexylamine
- 12 C-18
- 13 C-20

TKG 1113