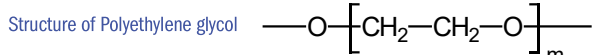


Meta. WAX 400

100% Polyethylene glycol (PEG), nonbonded phase.

- Column designed for analysis of volatiles in alcoholic beverages and solvents
- Maximum resolution of amylic alcohols
- High number of plates even at very low temperature (<20°C)



Meta.WAX 400 Equivalent Phase

Agilent: CP Carbowax 400

Meta.WAX 400

InternalLength	Film	Temp	Part.
Diam.(mm) (m)	Thickness (µm)	limits (°C)	N°. (P/N)
0,32	50	0 to 60/80	TR-402153

Meta.WAX 400

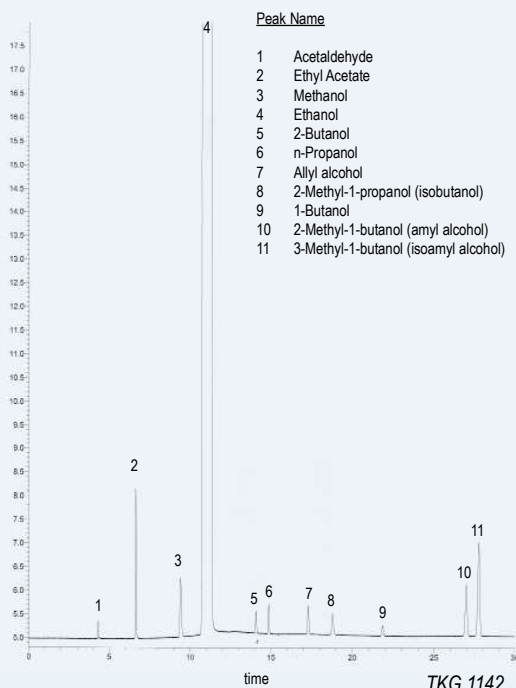
Column: **Meta.WAX 400**, 50 m x 0.32 mm x 0.20 µm,
P/N TR-402153

Injection: 1 µL standard (split 1:50), 175 °C

Carrier gas: He, 11 psi (75.8 kPa)

Oven: 30 °C (5 min) to 60 °C (10 min) @ 4 °C/min

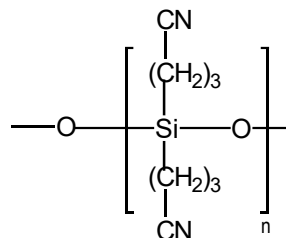
Detector: FID, 175 °C



TR-CN100

100% Cyanopropyl polysiloxane, nonbonded phase

- Column of maximum polarity
- Designed for separating fatty acids methyl esters (FAME)
- High selectivity towards cis-trans isomers of FAME



Structure of Poly (biscyanopropyl) siloxane

TR-CN100 Equivalent Phase

Agilent: CP-SIL 88

Supelco: SP-2340, SP-2380

Restek: Rt-2330, Rt-2580

TR-CN100

InternalLength	Film	Temp	Part.
Diam.(mm) (m)	Thickness (µm)	limits (°C)	N°. (P/N)
0,18	75	40 to 240/250	TR-881674
0,25	15	40 to 240/250	TR-882112
	30	40 to 240/250	TR-882132
	60	40 to 240/250	TR-882162
	100	40 to 240/250	TR-882192
0,32	15	40 to 240/250	TR-882113
	30	40 to 240/250	TR-882133
	60	40 to 240/250	TR-882163
0,53	15	40 to 225/250	TR-882115
	30	40 to 225/250	TR-882135
	60	40 to 225/250	TR-882165