

## Meta.VOC

### Proprietary Bonded and crosslinked phase.

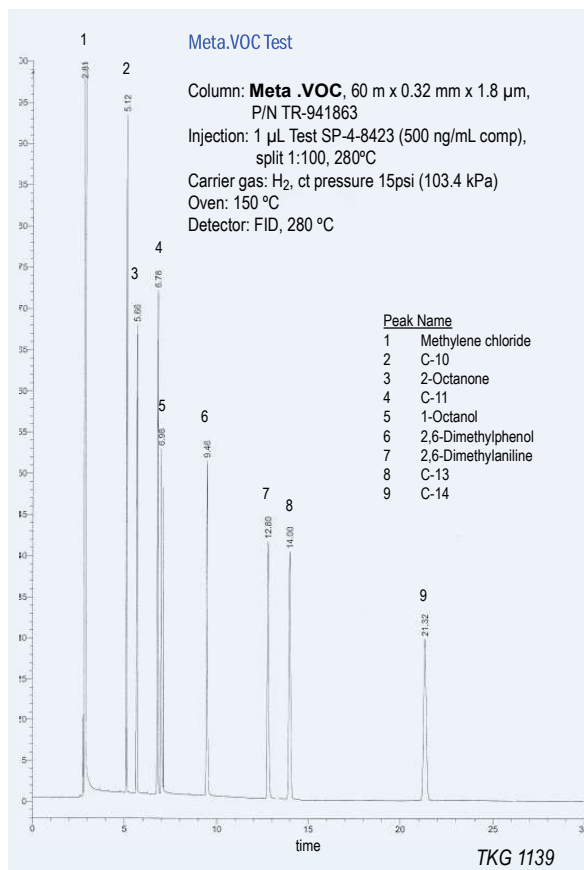
- Developed for analysis of volatile organic compounds (VOC)
- Intermediate polarity column

#### Meta.VOC Equivalent Phase

**Agilent:** DB-502.2, HP-VOC  
**Supelco:** VOCOL  
**Restek:** Rtx-502.2

#### Meta.VOC

InternalLength	Film	Temp	Part.
Diam.(mm) (m)	Thickness (µm)	limits (°C)	N°. (P/N)
<b>0,18</b>	20	1,00	-20 to 240/250 <b>TR-941084</b>
<b>0,20</b>	10	1,20	-20 to 240/250 <b>TR-941249</b>
<b>0,25</b>	30	1,50	-20 to 240/250 <b>TR-941532</b>
	60	1,50	-20 to 240/250 <b>TR-941562</b>
<b>0,32</b>	60	1,80	-20 to 240/250 <b>TR-941863</b>
	60	3,00	-20 to 230/240 <b>TR-943063</b>
<b>0,53</b>	30	3,00	-20 to 230/240 <b>TR-943035</b>
	60	3,00	-20 to 230/240 <b>TR-943065</b>
	105	3,00	-20 to 230/240 <b>TR-9430K5</b>



## TRB-608

### Proprietary Bonded and crosslinked phase.

- Specifically designed for analysing chlorinated pesticides and PCBs
- Designed for the EPA 508, 608 and 8080 methods.

#### TRB-608 Equivalent Phase

**Agilent:** HP-608  
**Supelco:** SPB-608  
**SGE:** BP-608

#### TRB-608

InternalLength	Film	Temp	Part.
Diam.(mm) (m)	Thickness (µm)	limits (°C)	N°. (P/N)
<b>0,18</b>	20	0,18	-20 to 300/310 <b>TR-360984</b>
<b>0,25</b>	30	0,25	-20 to 300/310 <b>TR-360232</b>
<b>0,53</b>	15	0,50	-20 to 290/300 <b>TR-360515</b>
	30	0,50	-20 to 290/300 <b>TR-360535</b>

