

Super Clean™ Gas Filters

ELECTRONIC INDICATOR



SGT — 
SCIENTIFIC GLASS TECHNOLOGY

2015

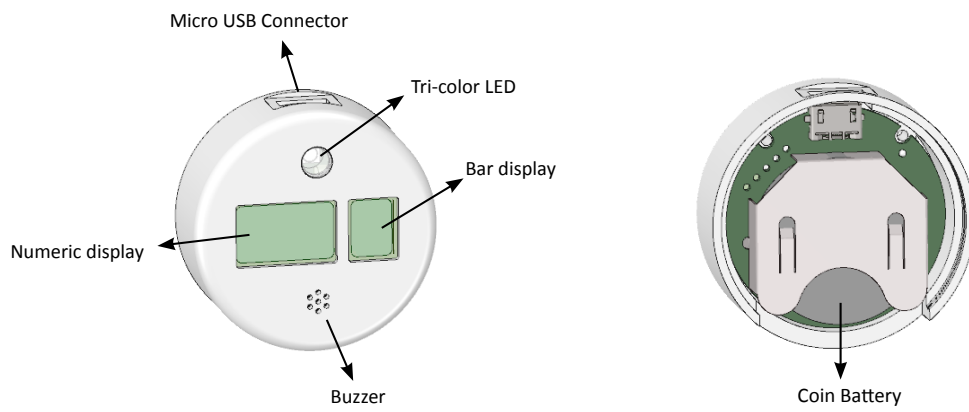
WWW.SGT-NL.COM

- Audio-visual warning system
- Progressively displays consumable maintenance status
- Reduced cost of ownership (discounted replacement filters)
- Can be configured according to your own replacement/maintenance schedule

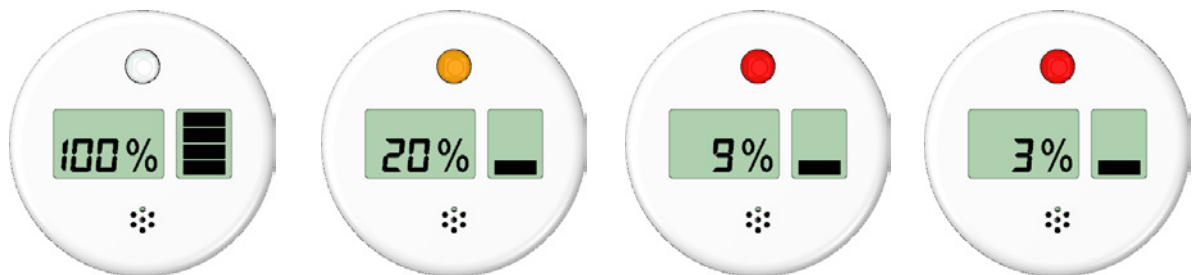
ABOUT THE ELECTRONIC INDICATOR

The Electronic Maintenance Indicator is a monitoring device that warns you when planned maintenance for a consumable is due. Depending on the model that you have purchased it can be attached to the consumable that you would like to monitor, or it can be placed on or near the equipment which has the consumable that you would like to monitor built in.

ELECTRONIC INDICATOR SYSTEM



The default maintenance interval of the device is factory set to 12 months. However it is possible that your service agent or instrument/consumable manufacturer have pre-configured a different recommended lifetime.

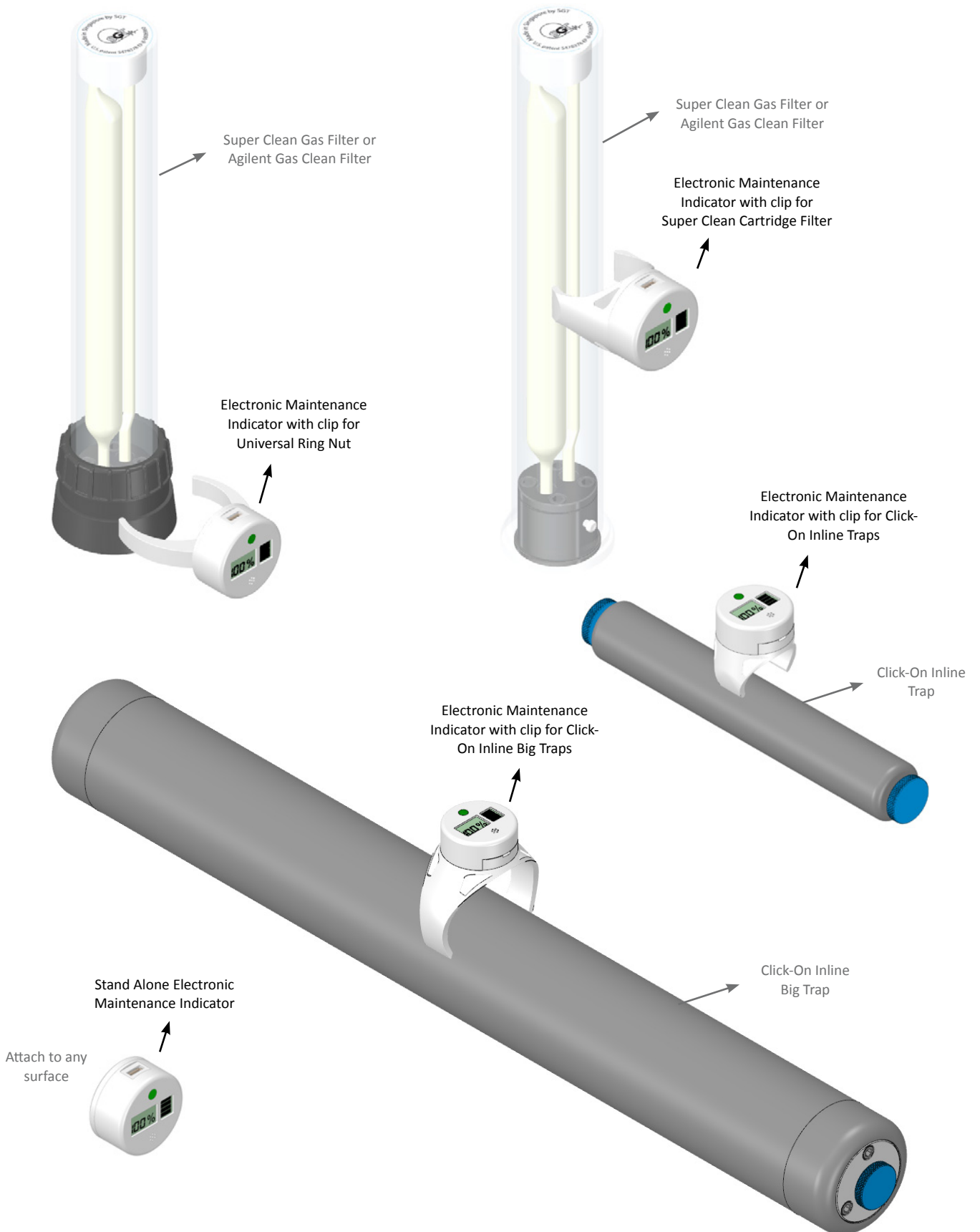


The LED will flash **orange** when the remaining time of the total lifetime of the device is between 20 and 10 percent.

The LED will flash **red** when the remaining time of the total lifetime of the device is between 9 and 0 percent.

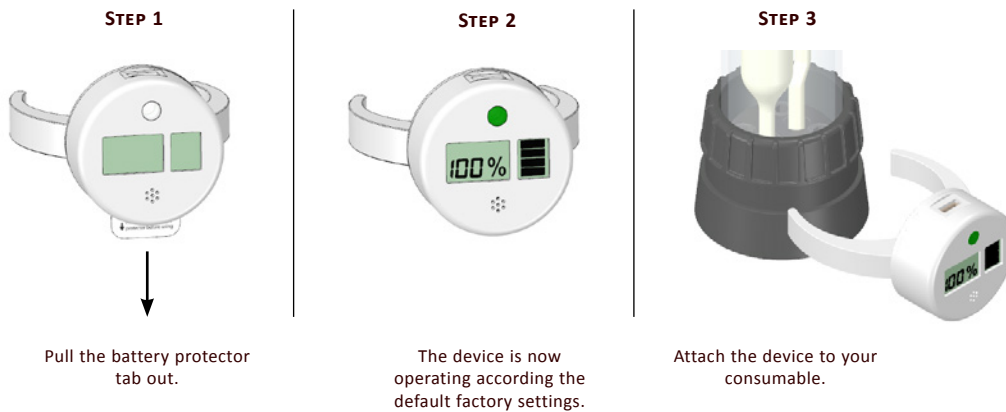
The buzzer will sound when the remaining time of the total lifetime of the device is between 3 and 0 percent.

Attachment of the Electronic Maintenance Indicator device onto the consumable varies by model and consumable.



Factory (default) Mode

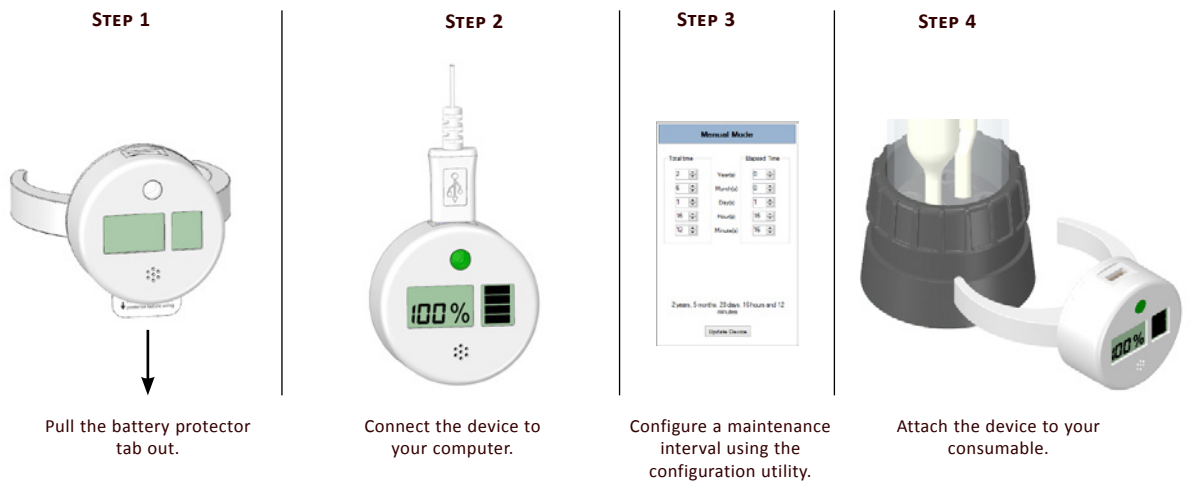
This operating mode is for users who want to replace their consumables based on the manufacturer’s default replacement advice of 12 months , and do not want to do any configuration or installation. This setting is only useful when you are installing a new filter and want to follow the standard manufacturer’s replacement advice not taking into account any other factors which can affect the expected lifetime of your consumable such as your gas quality and instrument usage.



Manual Configuration Mode

This operating mode is useful for users who already have their own replacement schedule in place for their consumables which deviates from the standard manufacturer’s replacement advice and want to use the Electronic Indicator Device to inform them about the current status and warn when the consumable is due for replacement. To configure custom replacement-schedule settings in the device, you have to connect the device to a computer and do a one-time configuration using the software configuration utility.

The Configuration Utility is a user friendly lightweight software utility that allows you to configure your Electronic Maintenance Indicator Device with your own preferred settings.



Catalog No. **Clip Type**
 SGT-E0010 Universal Ring Nut
Usable for
 Any Base plate with a Universal Ring Nut



ELECTRONIC INDICATOR KIT FOR UNIVERSAL RING NUT

Electronic Maintenance Indicator with clip for Universal Ring Nut.

Catalog No. **Clip Type**
 SGT-E0020 Click-On Inline Trap
Usable for
 Steel and Glass Click-On Inline Traps



ELECTRONIC INDICATOR KIT FOR CLICK-ON INLINE TRAPS

Electronic Maintenance Indicator with clip for Click-On Inline Traps.

Catalog No. **Clip Type**
 SGT-E0030 Click-On Inline Big Trap
Usable for
 Click-On Inline Big Traps



ELECTRONIC INDICATOR KIT FOR CLICK-ON BIG TRAP

Electronic Maintenance Indicator with clip for Click-On Inline Big Traps.

Catalog No. **Clip Type**
 SGT-E0040 Super Clean Cartridge
Usable for
 Super Clean Cartridge Filters



ELECTRONIC INDICATOR KIT FOR SUPER CLEAN CARTRIDGE

Electronic Maintenance Indicator with clip for Super Clean Cartridge Filter.

Catalog No. **Type**
 SGT-E0050 Back-cover
Usable for
 Any surface



ELECTRONIC INDICATOR KIT FOR UNIVERSAL USE

Stand alone Electronic Maintenance Indicator for universal use.

Catalog No. **Clip Type**
 SGT-E0011 Universal Ring Nut
Usable for
 Any Base plate with a Universal Ring Nut



MOUNTING CLIP FOR UNIVERSAL RING NUT

For use in combination with a Universal Ring Nut.

Catalog No. **Clip Type**
 SGT-E0021 Click-On Inline Trap
Usable for
 Steel and Glass Click-On Inline Traps



MOUNTING CLIP FOR CLICK-ON INLINE TRAP

For use in combination with a Click-On Inline Trap.

Catalog No. **Clip Type**
 SGT-E0031 Click-On Inline Big Trap
Usable for
 Click-On Inline Big Traps



MOUNTING CLIP FOR CLICK-ON INLINE BIG TRAP

For use in combination with a Click-On Inline Big Trap.

Catalog No. **Clip Type**
 SGT-E0041 Super Clean Cartridge
Usable for
 Super Clean Cartridge Filters



MOUNTING CLIP FOR SUPER CLEAN CARTRIDGE

For use in combination with a Super Clean Cartridge Filter.

Catalog No. **Type**
 SGT-E0051 Back-cover
Usable for
 Universal



BACK-COVER

Back-cover for Electronic Maintenance Indicator.

Catalog No. SGT-E0001

Usable for

 Any Electronic Indicator Device



REPLACEMENT BATTERY

Replacement Lithium Coin Cell battery CR2450 3 Volt.

Catalog No. SGT-E0002

Usable for

 Any Electronic Indicator Device



USB CABLE

Micro USB Data and Power Cable for use with Electronic Maintenance Indicator Device.

Catalog No. B0140

Usable for

 Any base plate



UNIVERSAL RING NUT

The Universal Ring Nut can be used as a mounting point for the Electronic Maintenance Indicator device.

ORDERING INFORMATION

Kits

Part No.	Description	qty.
SGT-E0010	Electronic Maintenance Indicator Kit for Universal Ring Nut For use with Universal Ring Nut (B0140). Includes Electronic Indicator Device, Battery, USB Cable and Mounting clip.	ea.
SGT-E0020	Electronic Maintenance Indicator Kit for Click-On Inline Filter For use with Click-On Inline Filters. Includes Electronic Indicator Device, Battery, USB Cable and Mounting clip.	ea.
SGT-E0030	Electronic Maintenance Indicator Kit for Click-On Big Trap For use with Click-On Big Trap. Includes Electronic Indicator Device, Battery, USB Cable and Mounting clip.	ea.
SGT-E0040	Electronic Maintenance Indicator Kit for Super Clean Gas Filters For use with existing Super Clean Gas filters. Includes Electronic Indicator Device, Battery, USB Cable and Mounting clip.	ea.
SGT-E0050	Stand Alone Electronic Maintenance Indicator Kit For use with other consumables. Includes Electronic Indicator Device, Battery, USB Cable and Back-cover.	ea.

Mounting Clips / Back-cover

Part No.	Description	qty.
SGT-E0011	Mounting Clip for Universal Ring Nut For use with Universal Ring Nut (B0140).	ea.
SGT-E0021	Mounting Clip for Click-On Inline Filter For use with Click-On Inline Filters.	ea.
SGT-E0031	Mounting Clip for Click-On Big Trap For use with Click-On Big Trap.	ea.
SGT-E0041	Mounting Clip for Super Clean Gas Filters For use with existing Super Clean Gas filters.	ea.
SGT-E0051	Back-cover For universal use.	ea.

Spare parts

Part No.	Description	qty.
SGT-E0001	Replacement Battery Replacement Lithium Coin Cell battery CR2450 3 Volt. Approx. 2 years lifetime in combination with Electronic Indicator Kit.	ea.
SGT-E0002	Micro USB Cable Micro USB Data and Power Cable for use with Electronic Maintenance Indicator Device.	ea.
B0140	Universal Ring Nut The Universal Ring Nut can be used as a mounting point for the Electronic Maintenance Indicator device.	ea.