

## POLYWAX 655

Column: **TRB-5ht**, P/N TR-620112

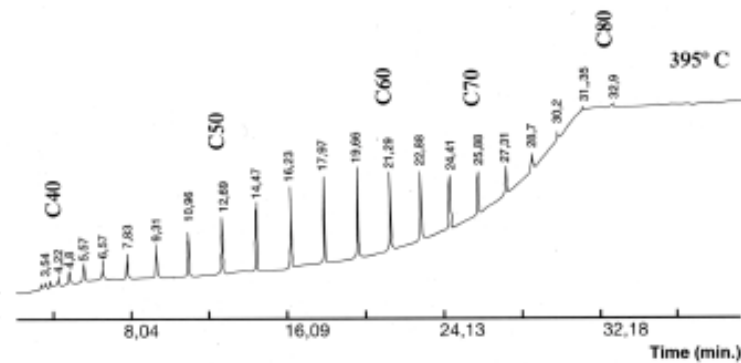
Dimensions: 15m x 0.32mm x 0.1µm

Injection: 0, 2µL (split) 2% Polywax 655 in Carbon sulfide

Oven program: 70°C to 250°C @ 70°C/min. to 395°C(10min) @ 5°C/min.

Detector: FID, 410°C

(base line without compensation)



TKG 1065

[www.teknokroma.com](http://www.teknokroma.com)

Teknokroma S. Coop. C. Ltda. - Camí de Can Calders, 14 - 08173 Sant Cugat del Vallès (Barcelona) Spain

Tel: +34) 936 748 800 Fax: +34) 936 752 405 e-mail: comercial@teknokroma.es