

MIX OF AROCLORS 1242, 1254 AND 1260 IN ISOOCTANE (10 PPM)

Column: **TRB-5MS**, P/N TR-520262

Size: 60m x 0.25mm x 0.25µm

Injection: splitless 60s, 270°C

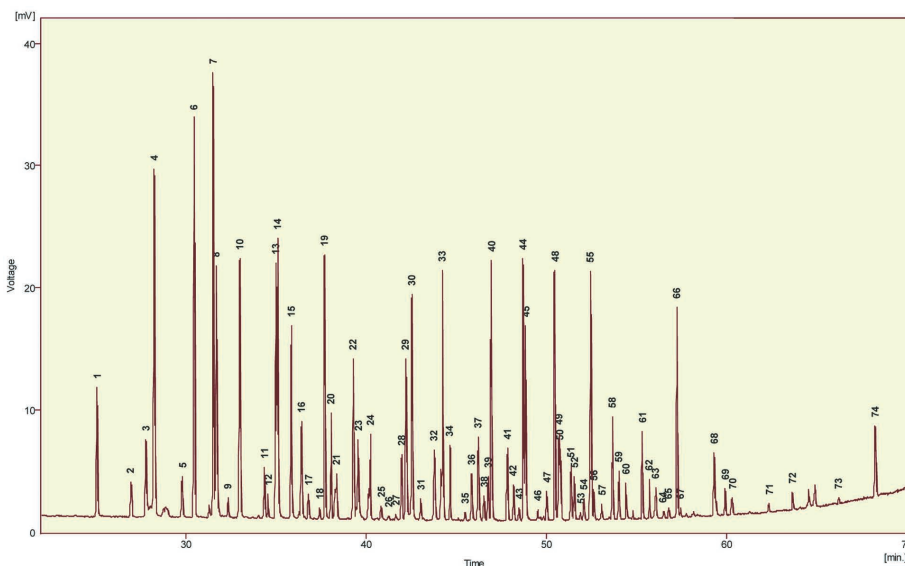
Sample: 1 µL Aroclors 1242, 1254 and 1260 standards in isooctane (10ppm), (1 ppm PCB30 and PCB209 internal standards)

Carrier Gas: He, 1mL/min

Program temperature: 70°C (1min) @ 30°C/min to 130°C @ 2.5°C/min to 300°C (15min)

Detector: MS KONIK-TECH, Modo EI+ (70 eV), SIM m/z 186, 222, 292, 326, 360, 394, 430, 464, 498 (50 ms), Source 140°C, Interface 300°C, Photomultiplier 1000V.

ID	Compound	Rt (min)	ID	Compound	Rt (min)	ID	Compound	Rt (min)	ID	Compound	Rt (min)
1	PCB4 / PCB10	25,10	13	PCB31	35,01	25	PCB40	40,85	38	PCB85	46,58
2	PCB7 / PCB9	26,96	14	PCB28	35,12	26	PCB67 / PCB100	41,28	39	PCB136	46,79
3	PCB6	27,80	15	PCB20 / PCB33 / PCB53	35,85	27	PCB63	41,69	40	PCB110	46,98
4	PCB5 / PCB8	28,25	16	PCB22 / PCB51	36,45	28	PCB74	41,98	41	PCB151 / PCB82	47,88
5	PCB19	29,84	17	PCB45	36,84	29	PCB70	42,23	42	PCB135	48,19
6	PCB30 (IS)	30,48	18	PCB46	37,44	30	PCB66 / PCB95	42,57	43	PCB107	48,51
7	PCB18	31,55	19	PCB52 / PCB69	37,73	32	PCB56 / PCB60	43,79	44	PCB149 / PCB123	48,74
8	PCB15 / PCB17	31,71	20	PCB49	38,08	33	PCB101 / PCB90	44,26	45	PCB118	48,87
9	PCB24 / PCB27	32,36	21	PCB47 / PCB48 / PCB75	38,39	34	PCB99	44,67	46	PCB134	49,52
10	PCB16 / PCB32	33,02	22	PCB44	39,30	35	PCB83	45,50	47	PCB146	50,05
11	PCB26	34,37	23	PCB37 / PCB42 / PCB59	39,58	36	PCB97	45,86	48	PCB153	50,50
12	PCB25	34,58	24	PCB41 / PCB64	40,25	37	PCB87 / PCB115	46,24	49	PCB132	50,71
									50	PCB105	50,79
									51	PCB141	51,40
									52	PCB179	51,57
									53	PCB130	51,93
									54	PCB137 / PCB176	52,08
									55	PCB138 / PCB160 / PCB163	52,48
									56	PCB158	52,67
									57	PCB129 / PCB178	53,11
									58	PCB187	53,69
									59	PCB183	54,05
									60	PCB128	54,43
									61	PCB174	55,35
									62	PCB177	55,73
									63	PCB171 / PCB156	56,07
									64	PCB201 / PCB157 / PCB173	56,51
									65	PCB172	56,80
									66	PCB180	57,27
									67	PCB193	57,47
									68	PCB170 / PCB190	59,33
									69	PCB199	59,94
									70	PCB196 / PCB203	60,34
									71	PCB195 / PCB208	62,38
									72	PCB194	63,68
									73	PCB206	66,23
									74	PCB209 (IS)	68,25



TKG 1226

www.teknokroma.com

Teknokroma S. Coop. C. Ltda. - Camí de Can Calders, 14 - 08173 Sant Cugat del Vallès (Barcelona) Spain
Tel: +34) 936 748 800 Fax: +34) 936 752 405 e-mail: comercial@teknokroma.es