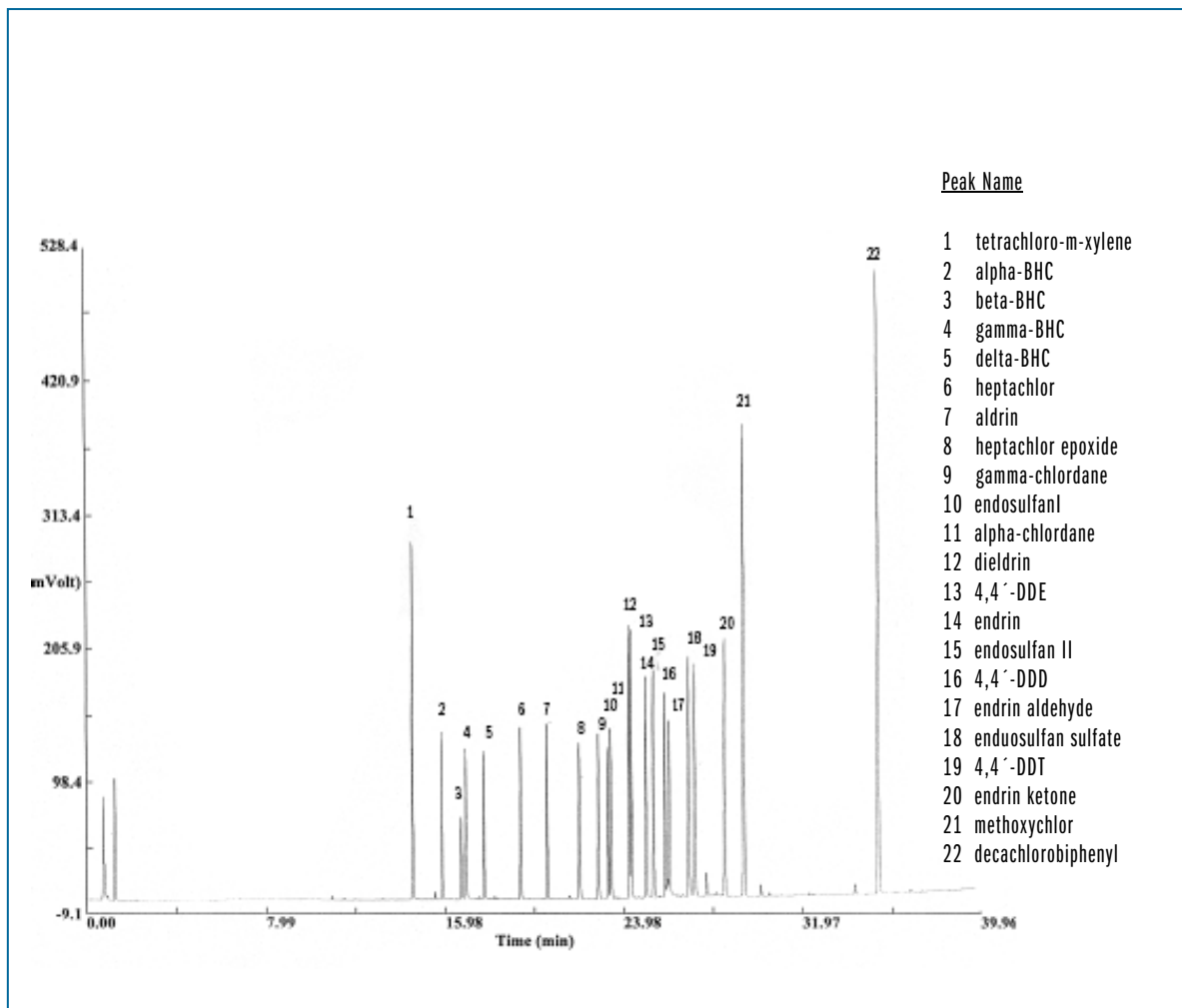


CHLORINATED PESTICIDES

Column: **TRB-5MS**, P/N TR-520232
 Dimensions: 30m x 0.25mm x 0.25µm
 Injection: 0.3µL chlorinated pesticide mix, splitless (0,5 min), 250°C
 (200-400 pgon-column)
 Carrier gas: H2, constant pressure 20 psi (137.8 KPa)
 Oven program: 80°C (5min) to 100°C @ 15°C/min to 160°C @ 8°C/min
 to 285°C @ 5°C/min (15min).
 Detector: ECD, 310°C



TKG 1022