

Enology Standard: Methanol And Higher Alcohols

Column: **SupraWax-280**, P/N TR-831035

Dimensions: 30m x 0.53mm x 1.0um

Injection: direct injection (packed column injector), 260°C

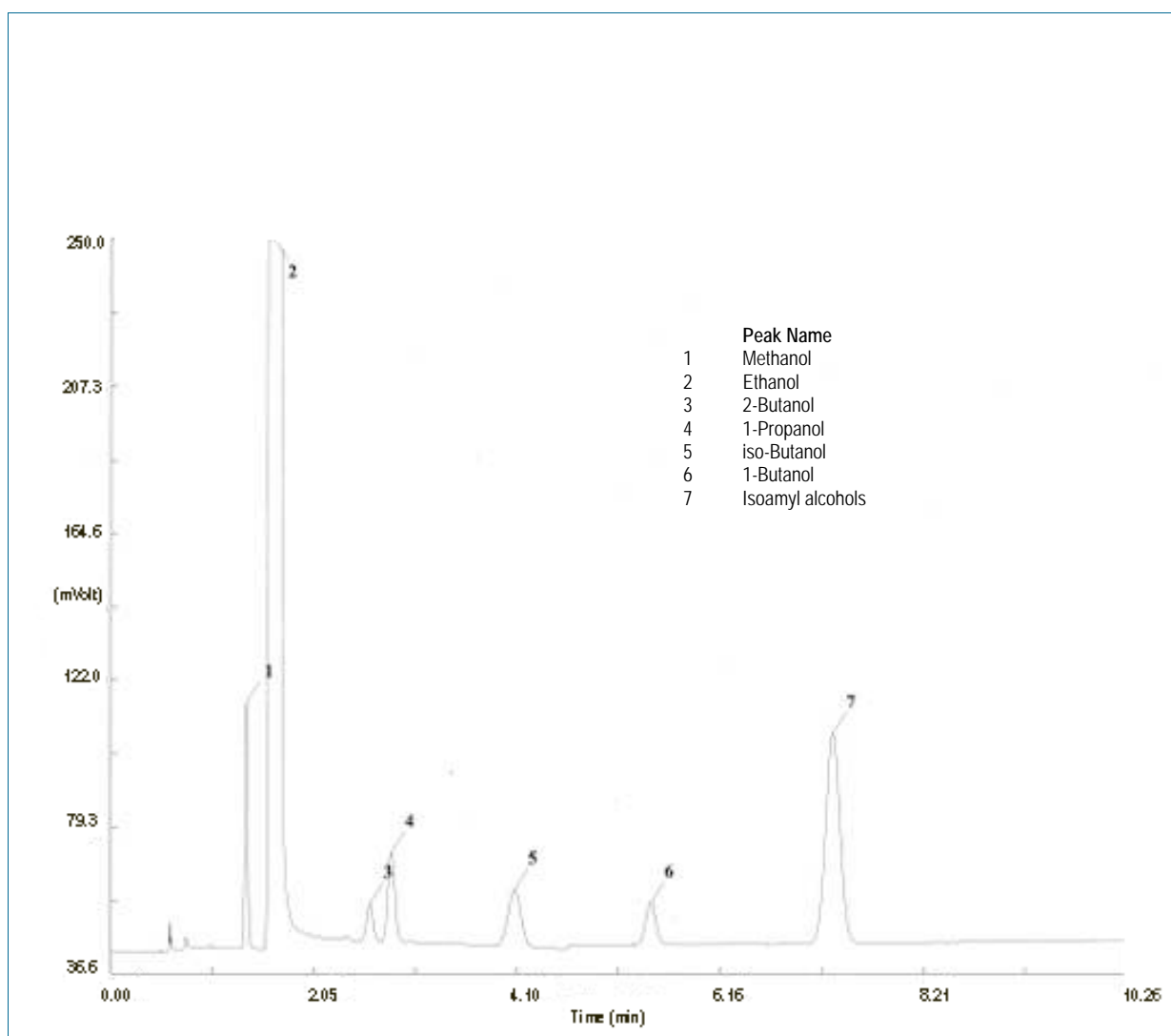
Liner: DI uniliner

Carrier gas: N₂, 15ml/min

Oven temperature: 40°C @ 2°C/min to 85°C

Detector: FID, 260°C

Sample: 0.3ul Enology Standard (Panreac P/N 345269; 19-108mg/L in ethanol 10%)



TKG 1277