

PUFA I

Column: **SupraWax-280**, 15m x 0.10mm x 0.10µm (P/N: TR-830111)

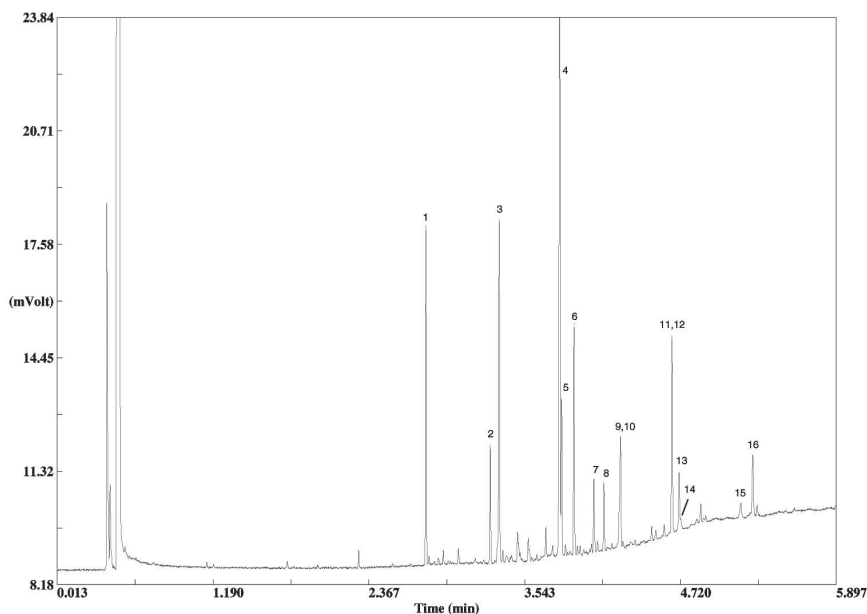
Injection: 280°C, split 200:1, precision liner

Detector: FID, 280°C

Carrier Gas: H₂, 45 psi (310.05 KPa)

Oven: 100°C (0.5min) @ 50°C/min to 280°C (2min)

Sample: 0.2µL PUFA I - Marine Source diluted to 50mg/ml in methylene chloride



Peak Name

1. C14:0
2. C16:0
3. C16:1ω7
4. C18:1ω9
5. C18:1ω7
6. C18:2ω6
7. C18:3ω3
8. C18:4ω3
9. C20:1ω9
10. C20:1ω11
11. C20:4ω3
12. C20:5ω3
13. C22:1ω11
14. C22:1ω9
15. C22:5ω3
16. C22:6ω3

TKG 1248

www.teknokroma.com

Teknokroma S. Coop. C. Ltda. - Camí de Can Calders, 14 - 08173 Sant Cugat del Vallès (Barcelona) Spain
Tel: +34) 936 748 800 Fax: +34) 936 752 405 e-mail: comercial@teknokroma.es