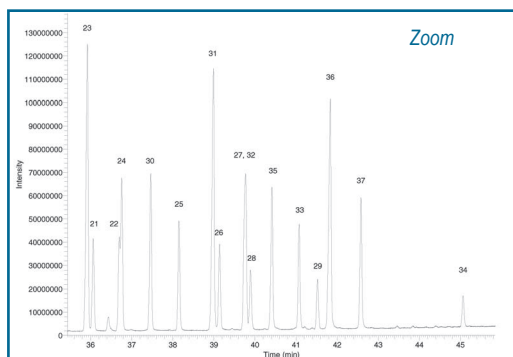


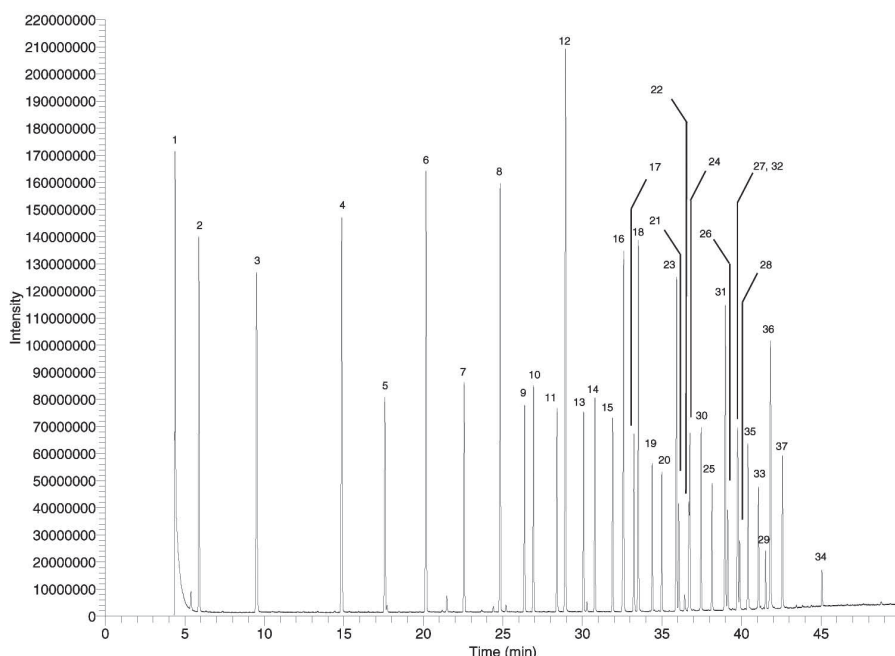
37 FAME MIX- MS DETECTOR

Column: **TR-CN100**, P/N: TR-882162
 Dimensions: 60m x 0.25mm x 0.20µm
 Injection: 280°C, split 50:1
 Carrier gas: Helium, constant pressure @ 24psi
 Oven temperature: 90°C (7min) to 240°C @ 4°C/min (3min)

Detector: MS
 Transfer line temp.: 230°C
 Ionization mode: EI
 Scan range: 40-450amu
 Sample: 0.5µL Food Industry FAME Mix
 30mg/ml in methylene chloride



TKG 1251



Peak Name
1. C4:0
2. C6:0
3. C8:0
4. C10:0
5. C11:0
6. C12:0
7. C13:0
8. C14:0
9. C14:1(<i>cis</i> -9)
10. C15:0
11. C15:1(<i>cis</i> -10)
12. C16:0
13. C16:1(<i>cis</i> -9)
14. C17:0
15. C17:1(<i>cis</i> -10)
16. C18:0
17. C18:1(<i>trans</i> -9)
18. C18:1(<i>cis</i> -9)
19. C18:2(<i>all-trans</i> -9,12)
20. C18:2(<i>all-cis</i> -9,12)
21. C18:3(<i>all-cis</i> -6,9,12)
22. C18:3(<i>all-cis</i> -9,12,15)
23. C20:0
24. C20:1(<i>cis</i> -11)
25. C20:2(<i>all-cis</i> -11,14)
26. C20:3(<i>all-cis</i> -8,11,14)
27. C20:3(<i>all-cis</i> -11,14,17)
28. C20:4(<i>all-cis</i> -5,8,11,14)
29. C20:5(<i>all-cis</i> -5,8,11,14,17)
30. C21:0
31. C22:0
32. C22:1(<i>cis</i> -13)
33. C22:2(<i>all-cis</i> -13,16)
34. C22:6 (<i>all-cis</i> -4,7,10,13,16,19)
35. C23:0
36. C24:0
37. C24:1(<i>cis</i> -15)

TKG 1229