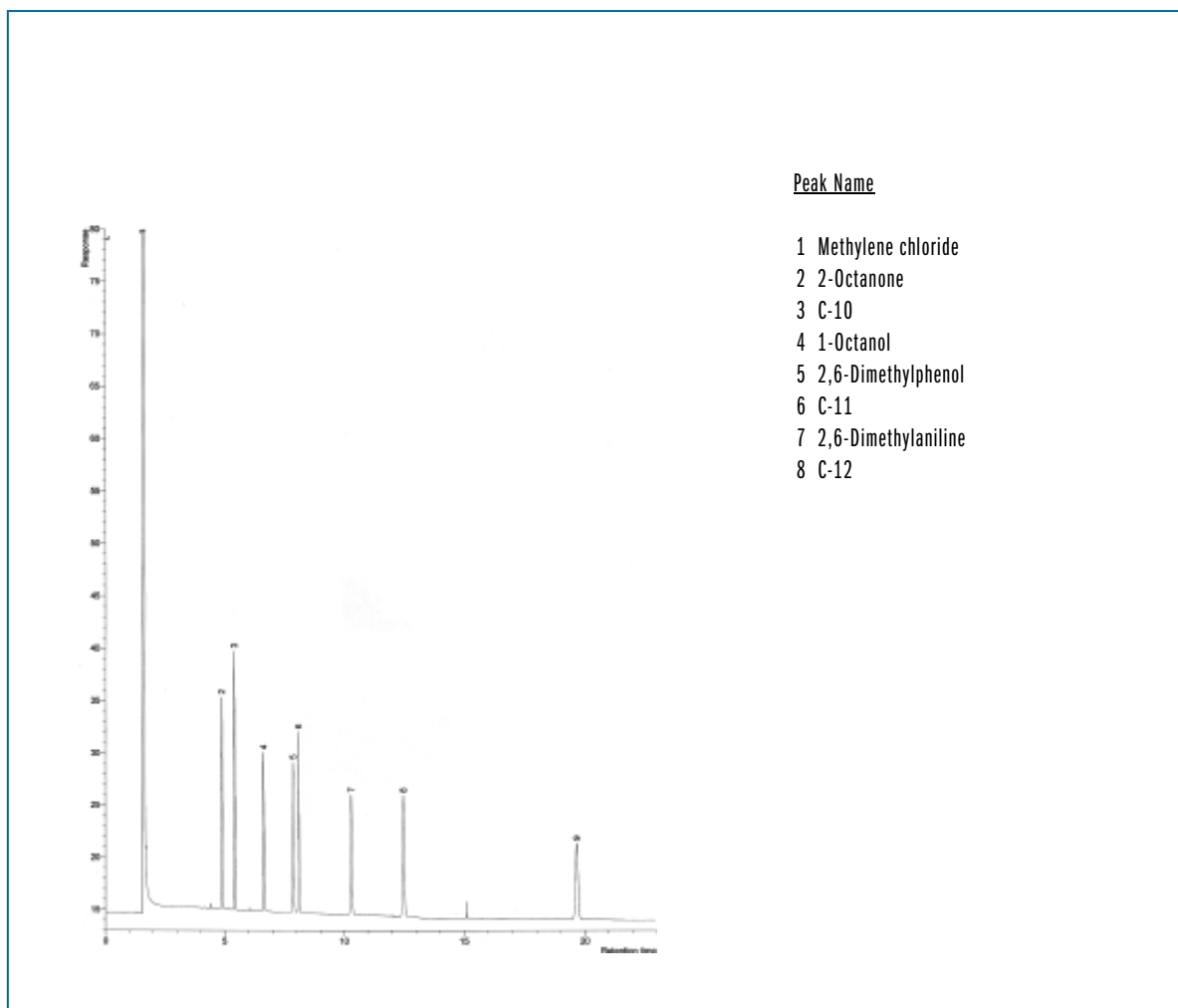


## TRB-1

Column: **TRB-1**, P/N TR-111226  
Dimensions: 25m x 0.15mm x 1.2µm  
Injection: 1µL Test SP-4-7300, split 1:100, 280°C  
Carrier gas: H<sub>2</sub>, constant pressure 22 psi (151.6 KPa).  
Oven program: 145°C (isothermal)  
Detector: FID, 300°C



TKG 1102