

EXTRACT OF ROSEMARY IN N-PENTANE

Column: **TRB-1**, P/N TR-110141

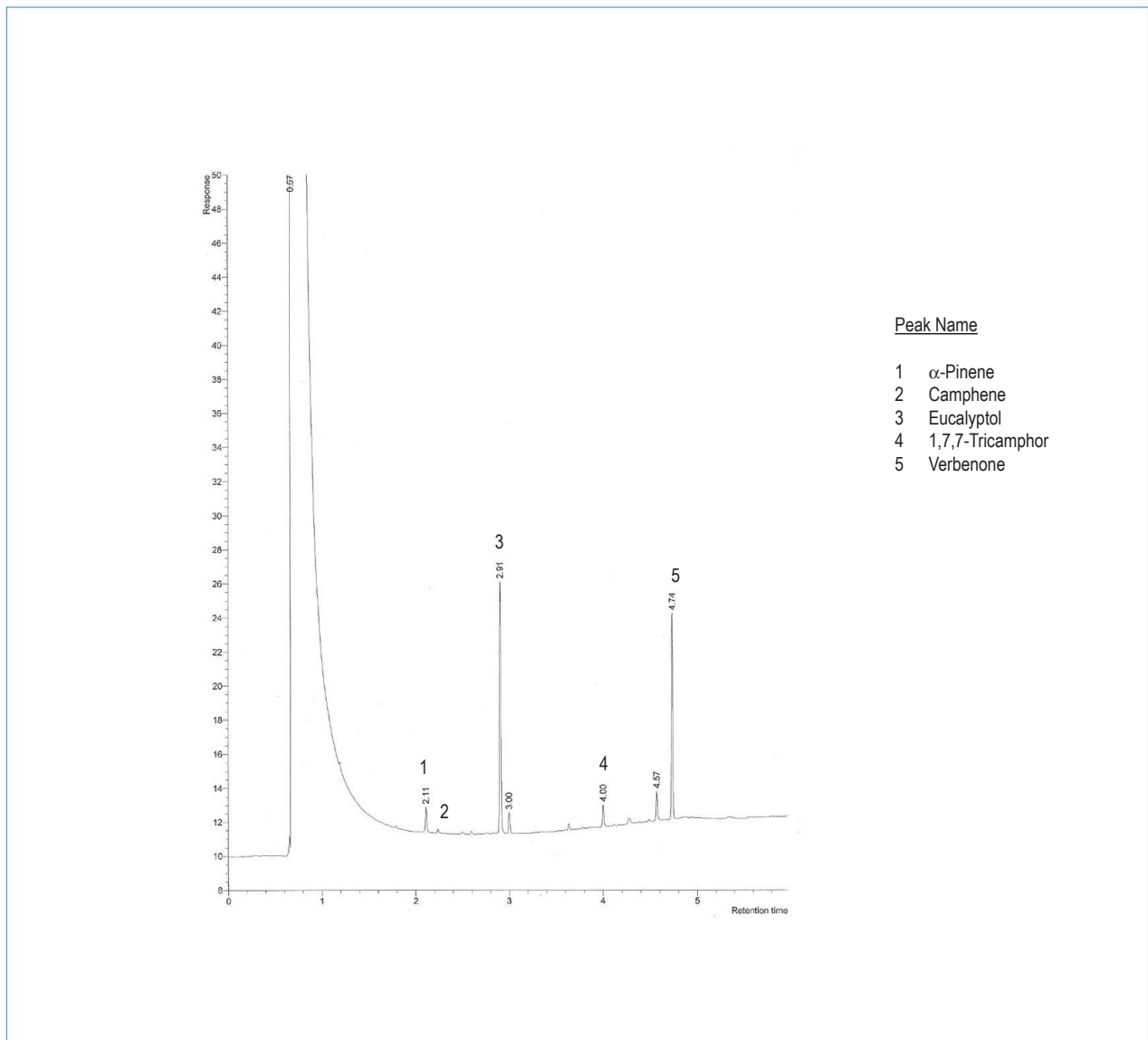
Size: 10m x 0.10mm x 0.10 μ m

Injection: 0.5 μ L, split 1:100, 300 $^{\circ}$ C (liner 1mm)

Carrier Gas: He, constant pressure 35 psi (0.4mL/min)

Program Temperature: 80 $^{\circ}$ C(2 min) @ 20 $^{\circ}$ C/min to 250 $^{\circ}$ C(5 min)

Detector: FID, 260 $^{\circ}$ C (make up N₂, 60 mL/min)



TKG 1196

www.teknokroma.com

Teknokroma S. Coop. C. Ltda. - Camí de Can Calders, 14 - 08173 Sant Cugat del Vallès (Barcelona) Spain
Tel: +34) 936 748 800 Fax: +34) 936 752 405 e-mail: comercial@teknokroma.es