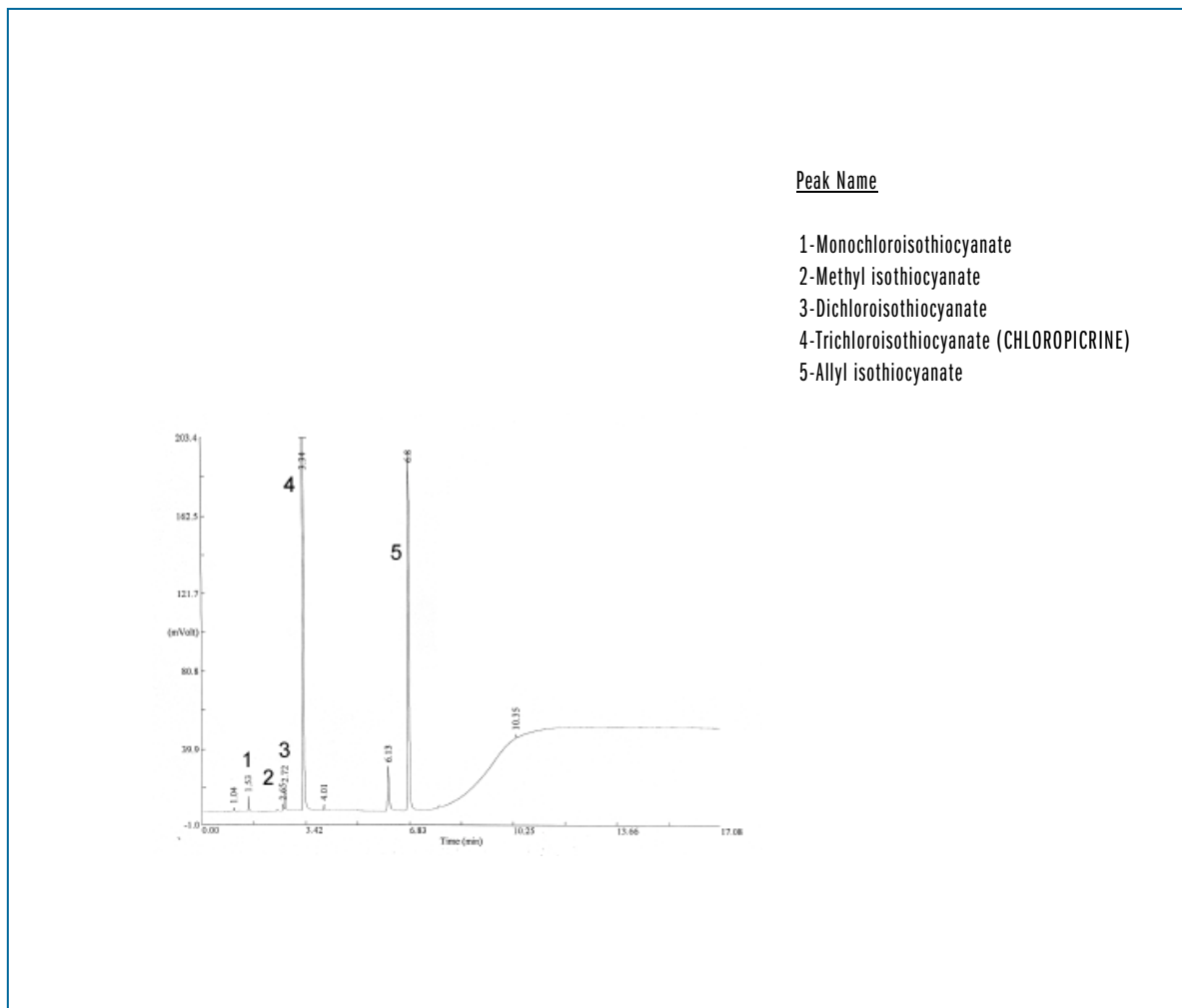


ANALYSIS OF CHLOROPICRINE IN WINES

Column: **TRB-5**, P/N TR-120232
Dimensions: 30m x 0.25mm x 0.25µm
Injection: 1µL standard (5mg/L), 200°C
Carrier gas: H₂, 12 psi (82.7 KPa)
Oven temperature: 43°C(7min) @ 30°C/min to 120°C(10min)
Detector: ECD, 300°C



TKG 1032