

### Bleed level (GROB test)

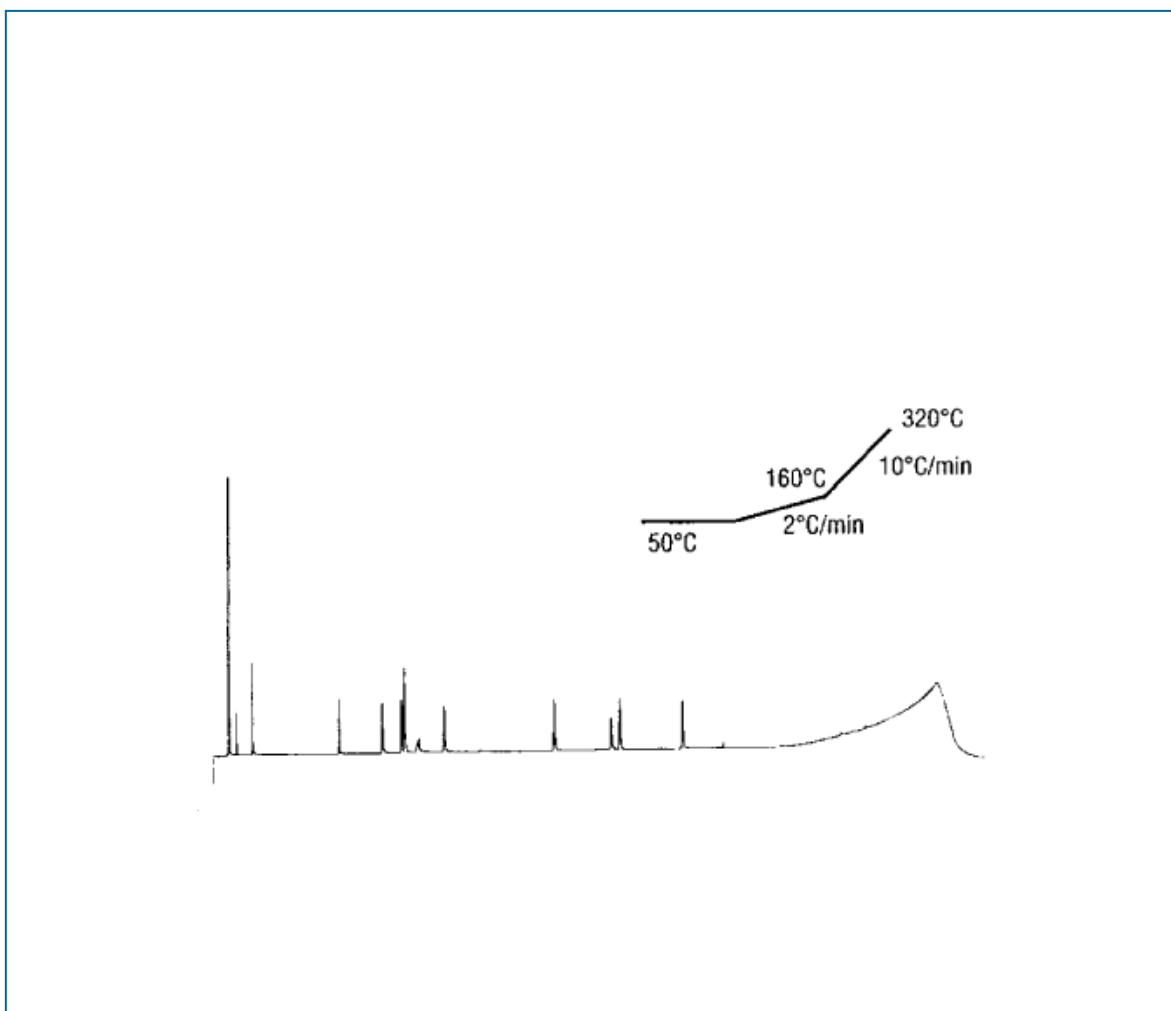
Column: **TBR-5**, 15m x 0.25mm ID x 0.25 $\mu$ m.

Carrier gas: He, 6 psi.

Injection: 1 $\mu$ l, split. (1:100), 280 $^{\circ}$ C

Detector: FID, 350 $^{\circ}$ C

Bleed level (FID) <4pA (325 $^{\circ}$ C)



TKG 1101

[www.teknokroma.com](http://www.teknokroma.com)