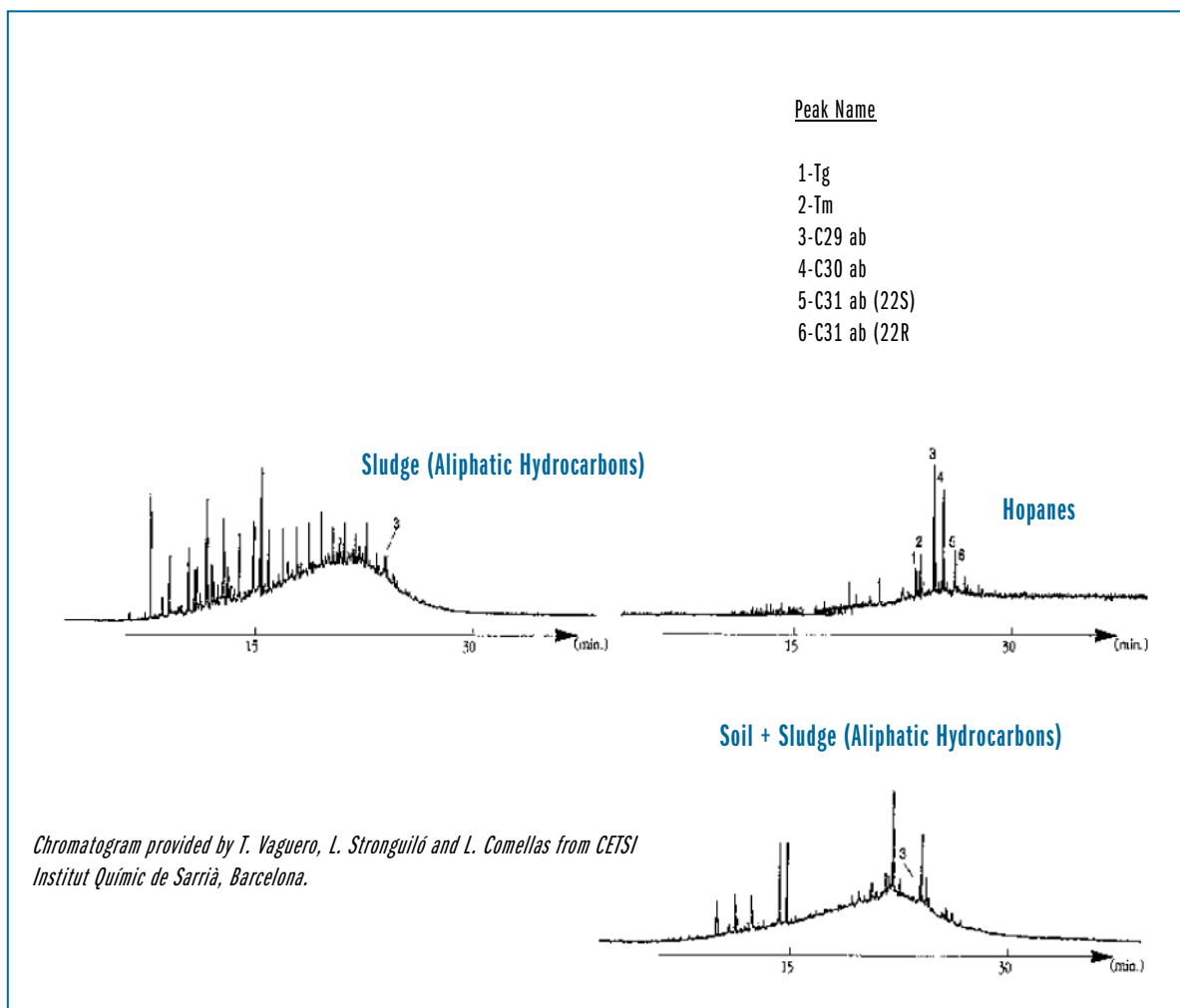


ANALYSIS OF SOIL AND SLUDGE OF A WATER-TREATMENT PLANT

Column: **TRB-5**, P/N TR-120233
 Dimensions: 30m x 0.32mm x 0.25µm
 Injection: splitless 1 min
 Carrier gas: He, 20 psi
 Oven temperature: 65°C(1.2 min) @ 30°C/min to 90°C(1 min)
 @ 10°C/min to 300°C(15 min)
 Detector: MS



TKG 1154