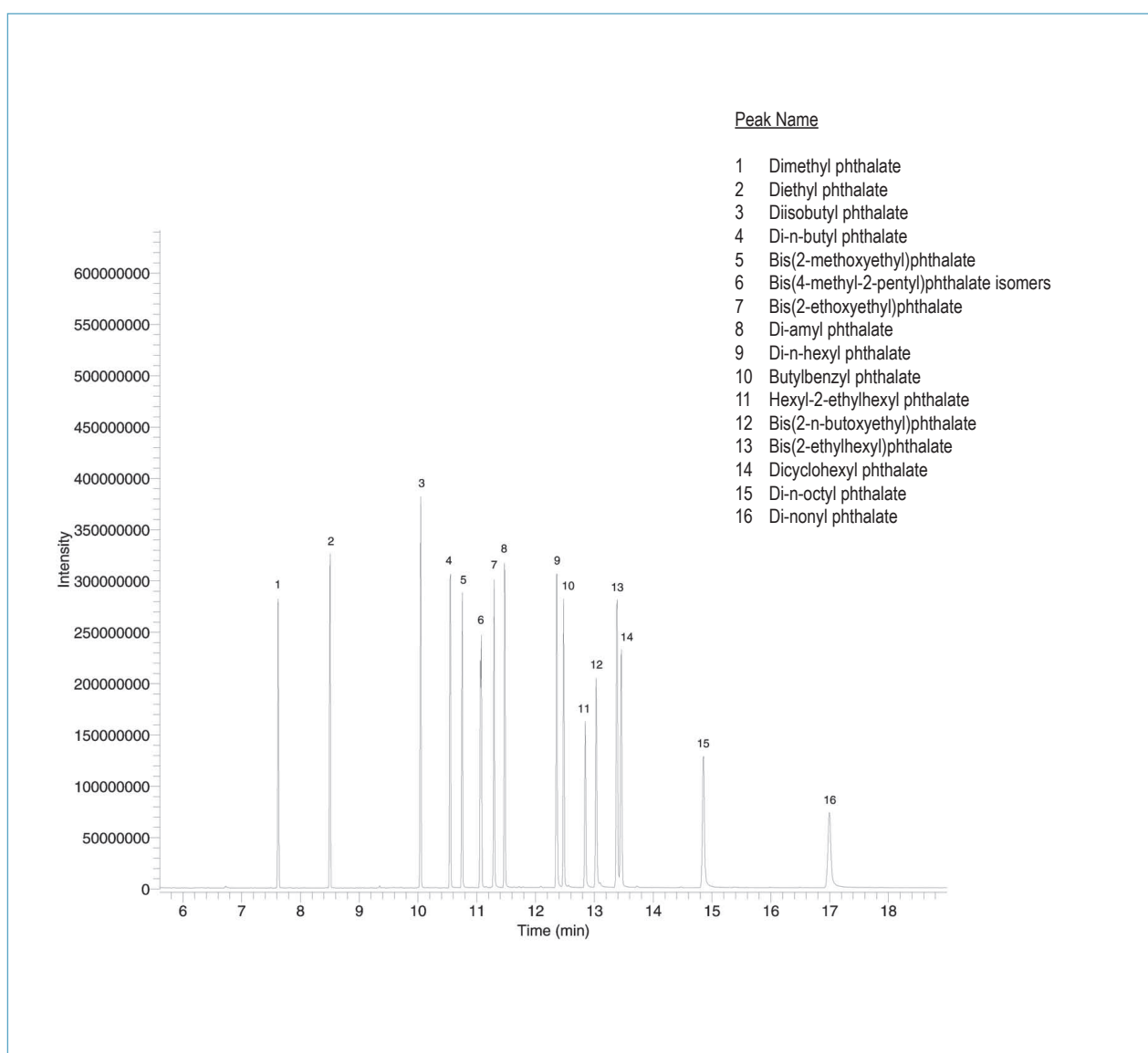


## SEPARATION OF PHTHALATES

Column: **Meta.X5**, 30m x 0.25mm x 0.25 $\mu$ m (P/N: TR-820232)  
 Injection: Splitless w/Surge: pulse 20psi @ 0.30min, 25ml/min @ 1min  
 Injection temp.: 300°C  
 Oven temperature: 80°C (2min) to 280°C (8min) @ 20°C/min  
 Carrier gas: Helium, constant flow @ 1.5ml/min  
 Detector: MS  
 Transfer line temp.: 300°C  
 Ionization mode: EI  
 Scan range: 35-550amu  
 Sample: 1 $\mu$ l Phthalate Ester Mix 20ppm each compound



TKG 1244

[www.teknokroma.com](http://www.teknokroma.com)

Teknokroma S. Coop. C. Ltda. - Camí de Can Calders, 14 - 08173 Sant Cugat del Vallès (Barcelona) Spain  
 Tel: +34) 936 748 800 Fax: +34) 936 752 405 e-mail: [comercial@teknokroma.es](mailto:comercial@teknokroma.es)