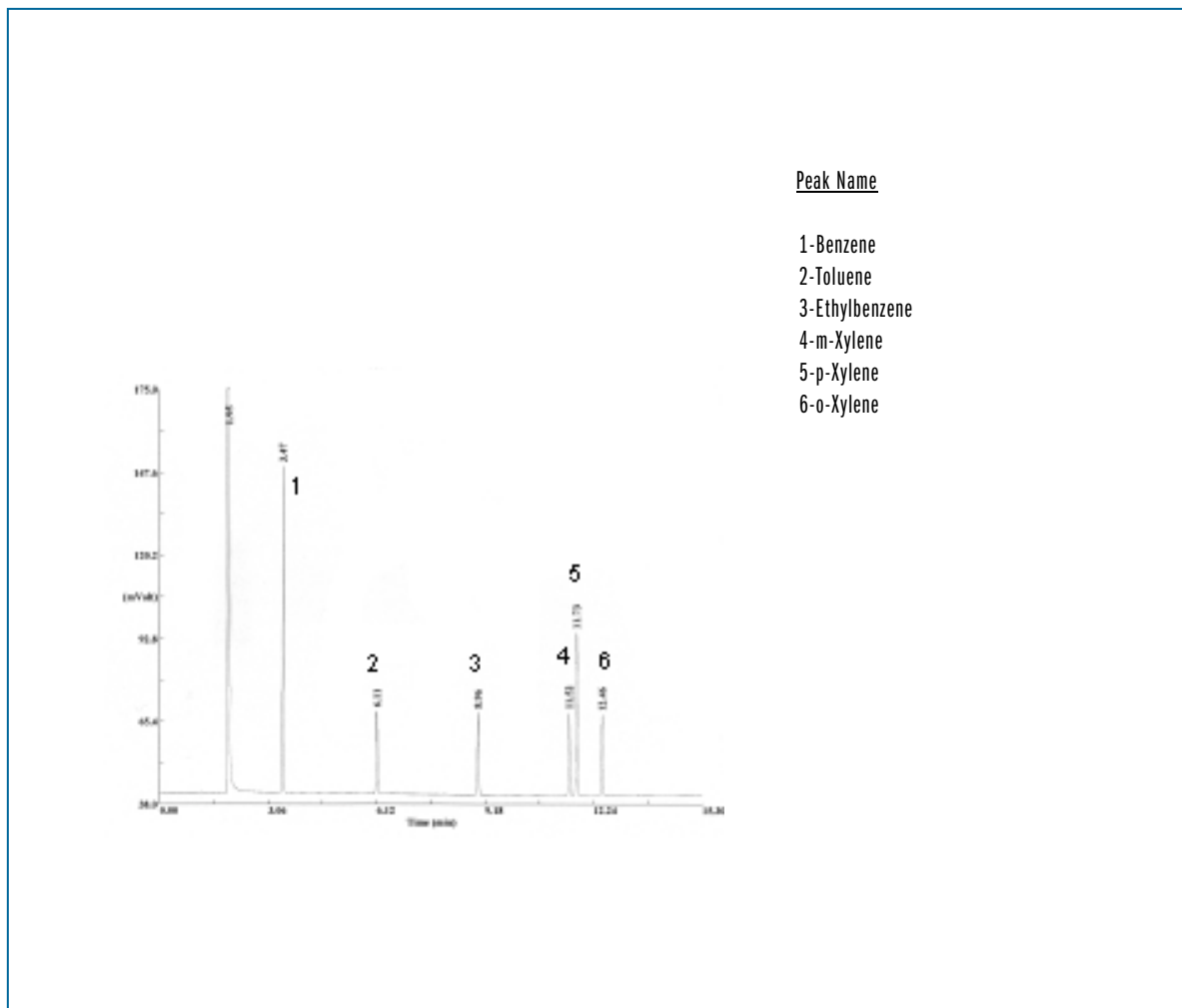


SEPARATION OF BTEX ISOMERS

Column: **TRB-624**, P/N TR-601833
Dimensions: 30m x 0.32mm x 1.8µm
Injection: 1µL BTEX sample (50 ppm on column), 260°C
Carrier gas: H₂, 6.9 psi (47.9 KPa)
Oven temperature: 40°C @ 8°C/min to 240°C(10min)
Detector: FID, 260°C



TKG 1043