

**EPA 601/602 PURGEABLE HALOCARBONS MIX PLUS2
-CHLOROETHYL VINYL ETHER**

Column: **TRB-624**, P/N TR-601462

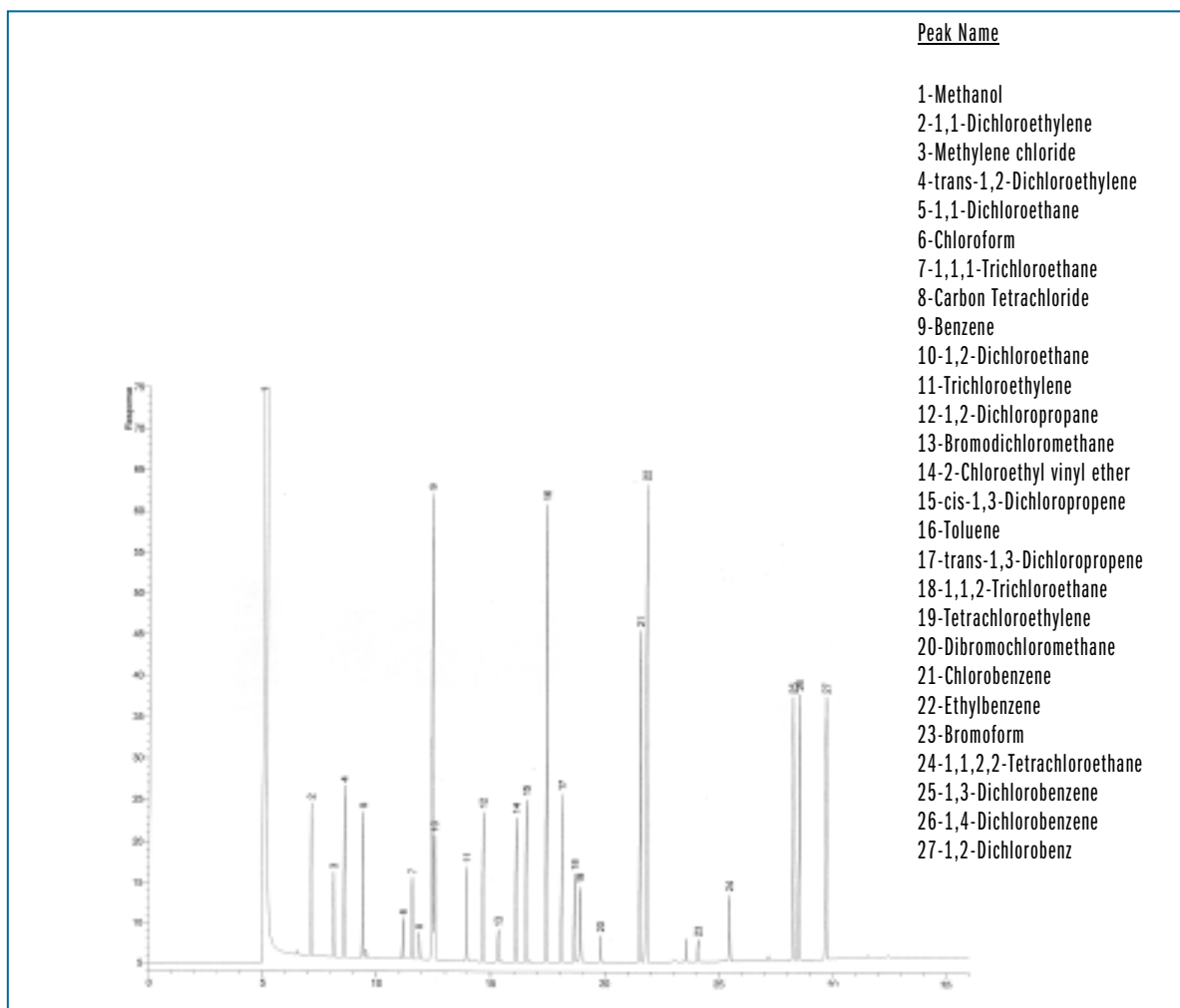
Dimensions: 60m x 0.25mm x 1.4µm

Injection: 0.5µL EPA 601/602 Purgeable Halocarbons Mix (2000 ng/mL),
split1:50, 260°C

Carrier gas: He 30cm/s, constant pressure 35 psi (241.15 KPa)

Oven temperature: 40°C(3min) @ 8°C/min to 90°C(4min) @ 6°C/min to 200°C(5min)

Detector: FID, 260°C



TKG 1093