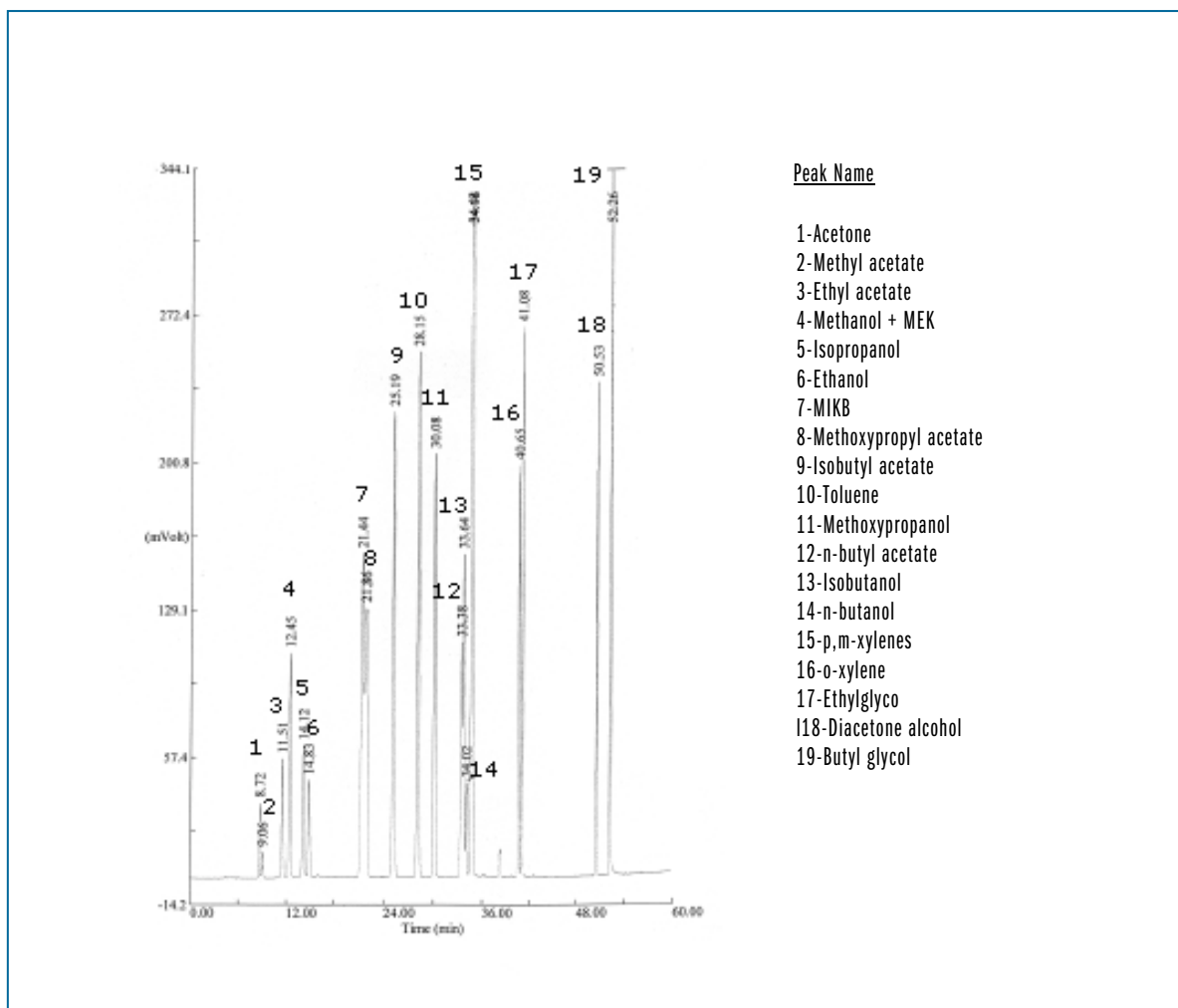


ANALYSIS OF SOLVENTS

Column: **TRB-WAX**, P/N TR-142065
 Dimensions: 60m x 0.53mm x 2.0µm
 Injection: wet needle, split, 250°C
 Carrier gas: H₂, constant pressure 4 psi (27.6 KPa).
 Oven program: 55°C(20min) @ 3°C/min to 220°C(15min)
 Detector: FID, 260°C



TKG 1003