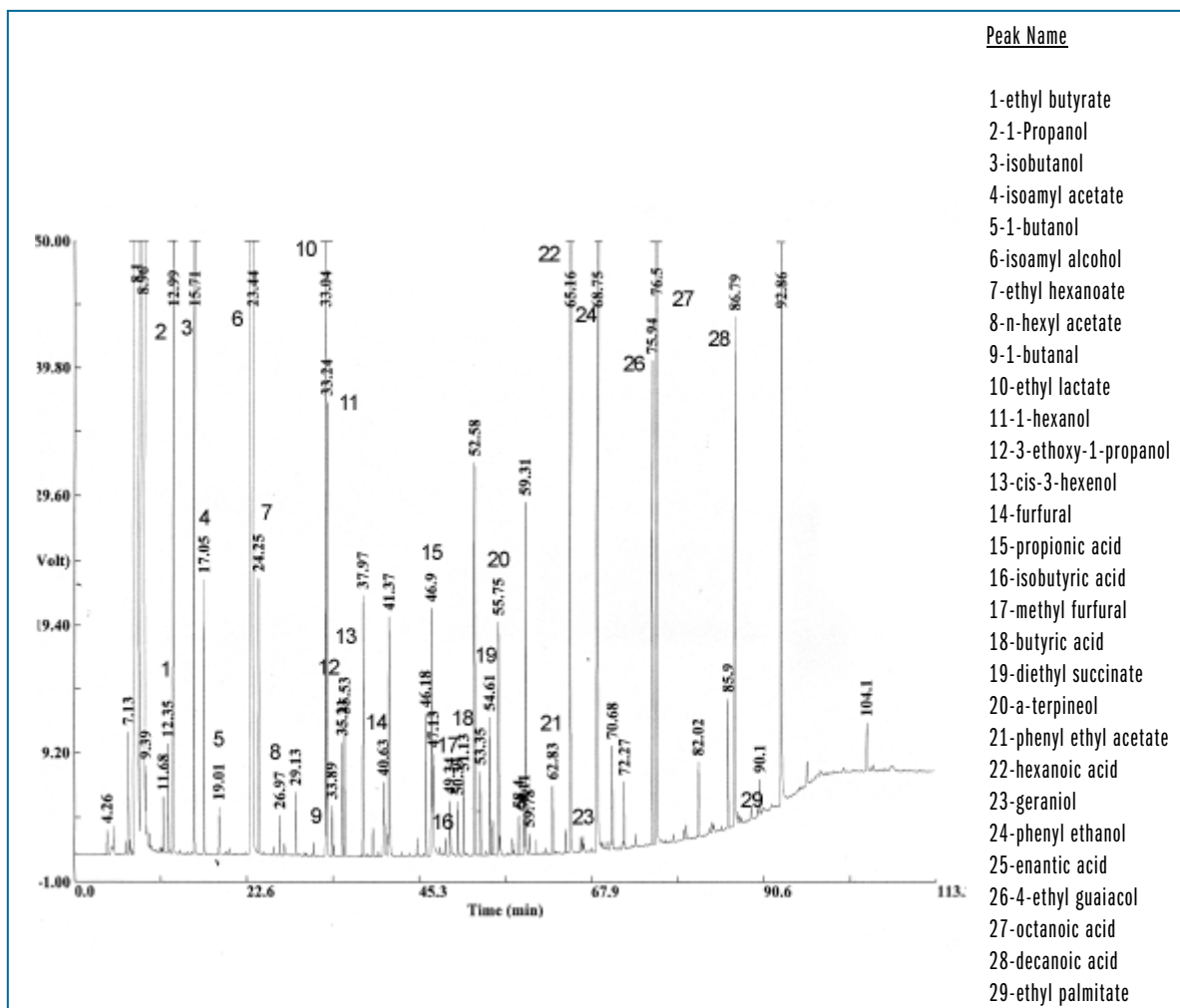


ESSENTIAL OIL

Column: TRB-WAX, P/N TR-140262
 Dimensions: 60m x 0.25mm x 0.25µm
 Injection: 1.5µL Essential oil, splitless 0.5min, 250°C
 Carrier gas: He, constant pressure 26 psi (180 KPa).
 Oven program: 45°C(5min) @ 2°C/min to 230°C(15min)
 Detector: FID, 280°C



TKG 1031