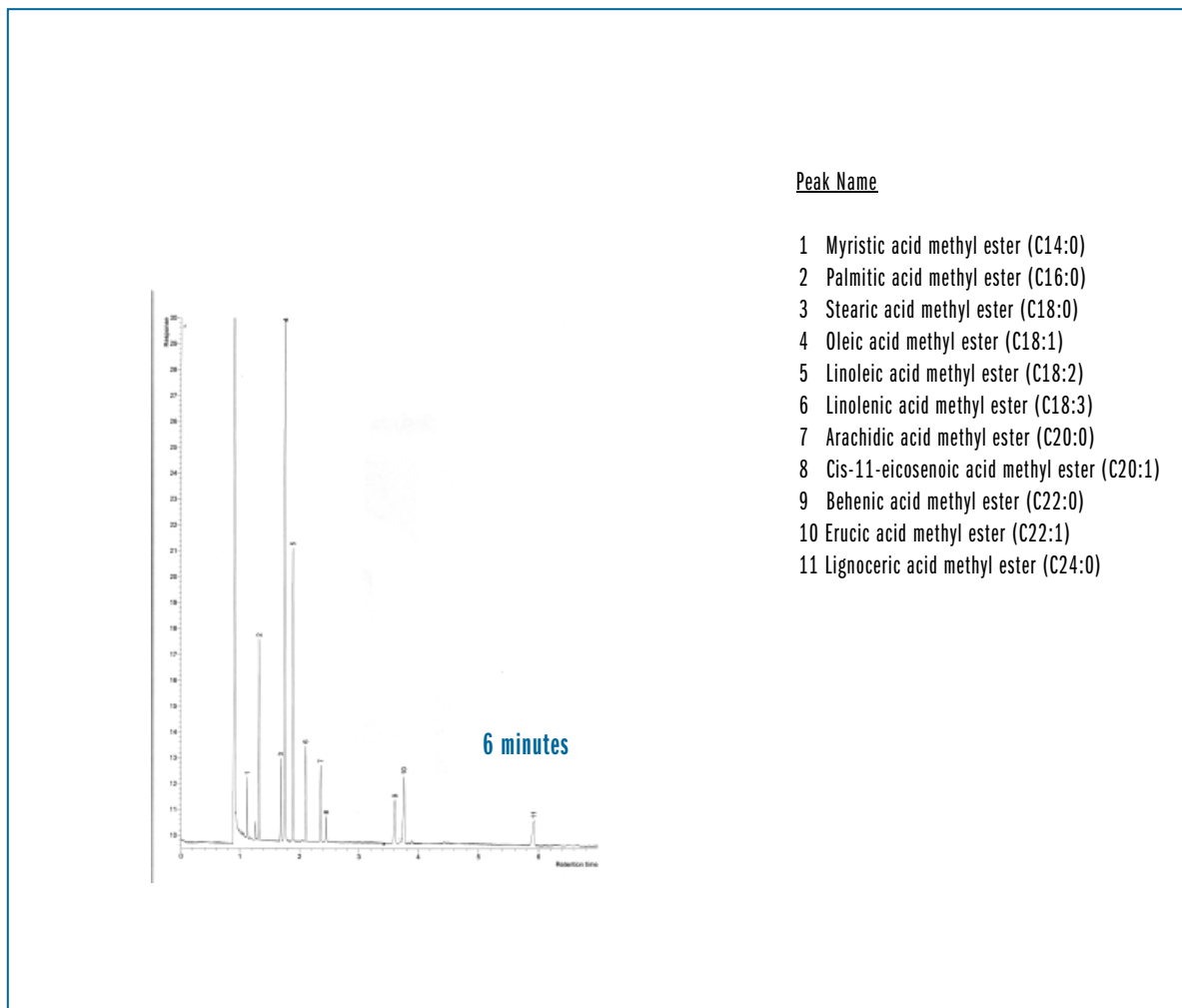


ANALYSIS OF RAPESEED OIL (FAST CHROMATOGRAPHY)

Column: **TRB-WAX**, P/N TR-142181
Dimensions: 20m x 0.10mm x 0.2µm
Injection: 0.7µL Rapeseed oil, split 1:500, 280°C
Carrier gas: H₂, constant pressure, 54 psi (372 KPa), 41.15 cm/s
Oven temperature: 205°C (Isothermal)
Detector: FID, 280°C



TKG 1045