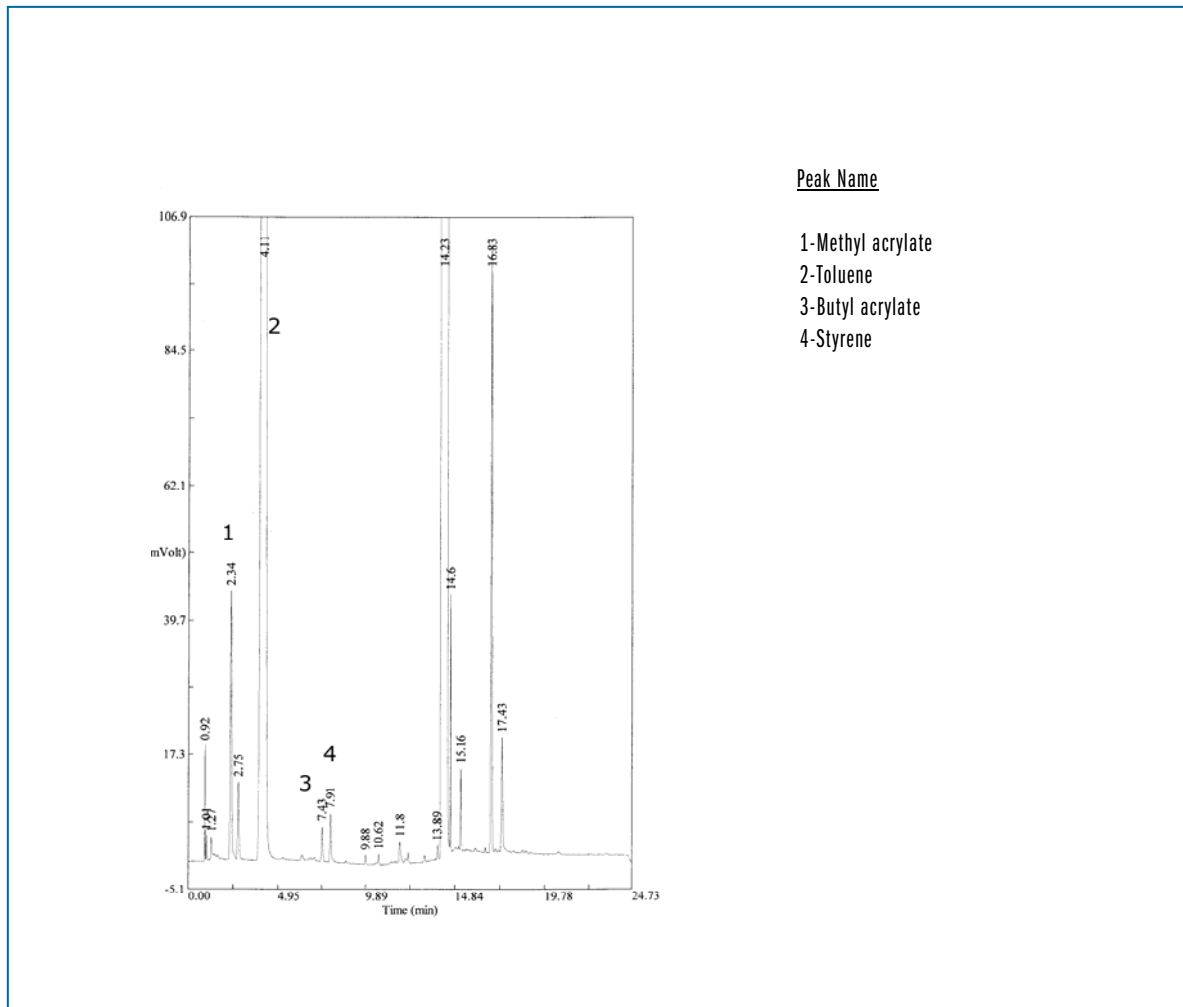


## SEPARATION OF MONOMERS IN PAINTS

Column: Meta .WAX, P/N TR-811035  
Dimensions: 30m x 0.53mm x 1.0µm  
Injection: 1µL Monomers mixture (20ppm, 100ppm toluene in DMSO), split 1:50, 240°C  
Carrier gas: He, 4 psi (27.6 KPa)  
Oven temperature: 40°C(5min) @ 15°C/min to 180°C(15min)  
Detector: FID, 240°C



TKG 1005

[www.teknokroma.com](http://www.teknokroma.com)

Teknokroma S. Coop. C. Ltda. - Camí de Can Calders, 14 - 08173 Sant Cugat del Vallès (Barcelona) Spain  
Tel: +34) 936 748 800 Fax: +34) 936 752 405 e-mail: comercial@teknokroma.es