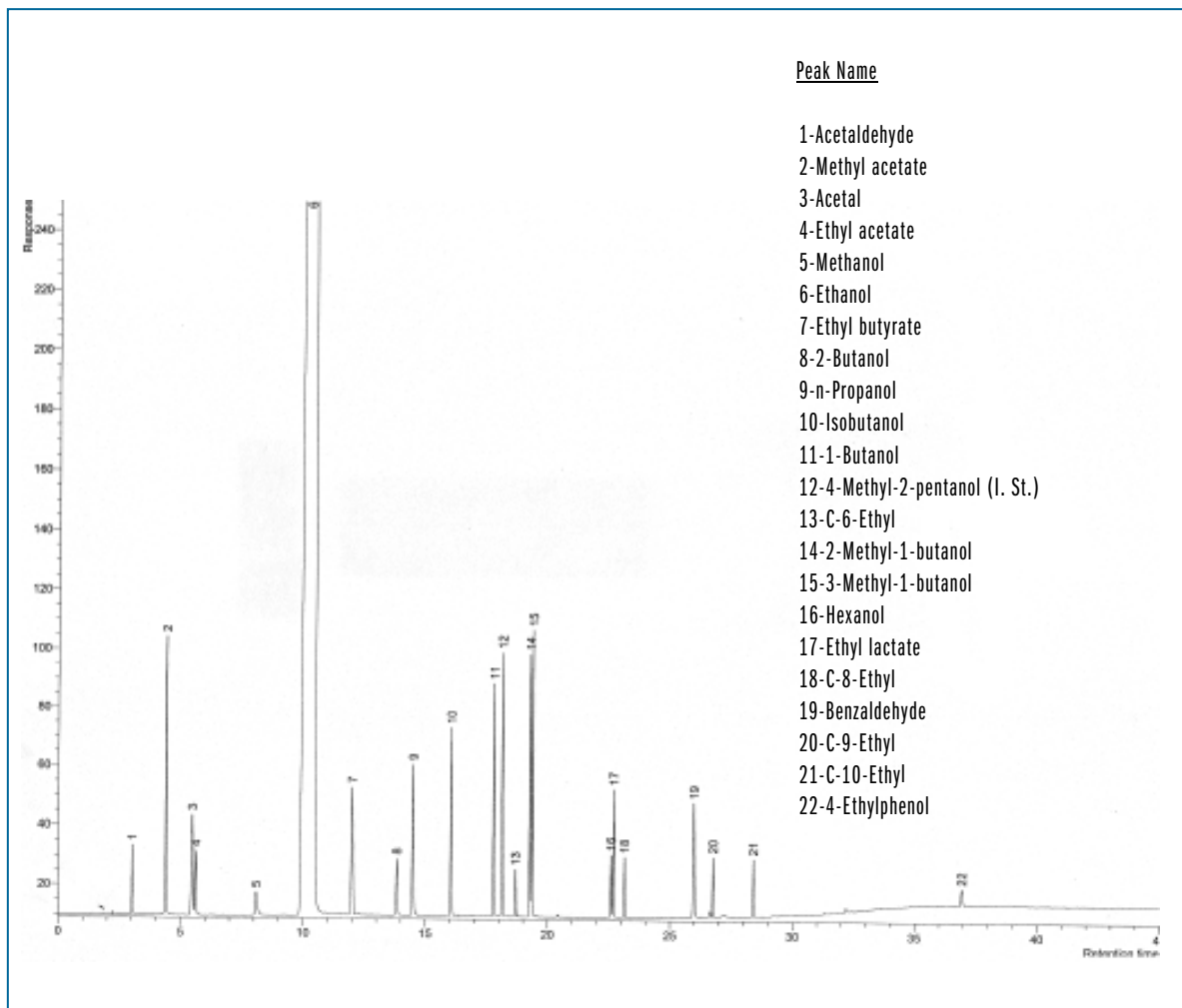


SEPARATION OF VOLATILES IN ALCOHOLIC BEVERAGES

Column: Meta .WAX, P/N TR-810532
 Dimensions: 30m x 0.25mm x 0.5µm
 Injection: 0.6µL mixture of solvents 1% in Ethanol, split 1:100, 250°C
 Carrier gas: He, 12 psi (82.7 KPa)
 Oven temperature: 35°C(10min) @ 8°C/min to 220°C(15min)
 Detector: FID, 260°C



TKG 1026

www.teknokroma.com