

## CHLOROFORM IMPURITIES

Column: **Meta.VOC**, P/N TR-943035

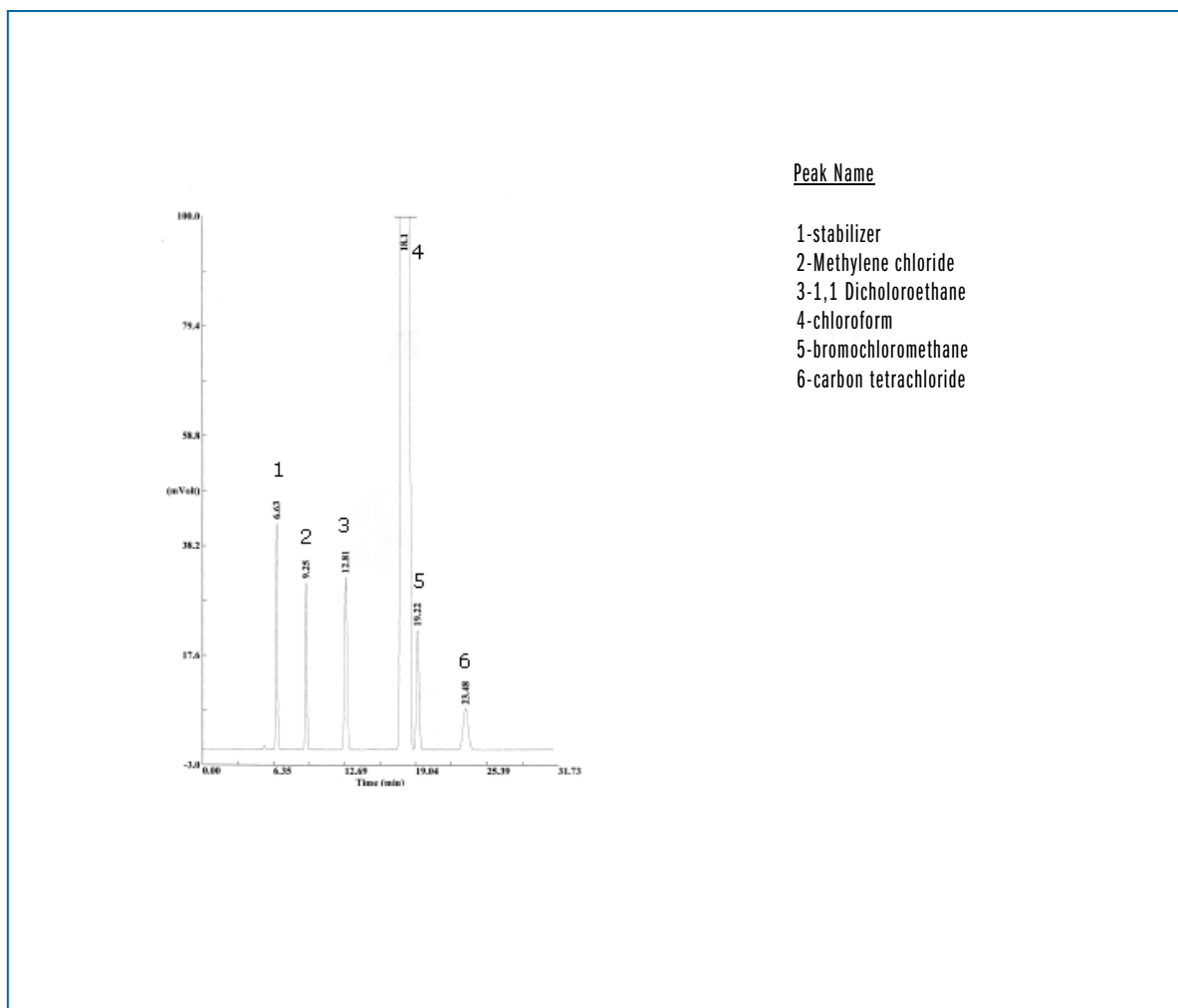
Column: **Meta.VOC**, P/N TR-943035

Injection: 1µl chloroform , split, 5:1, 150°C

Carrier gas: He, constant pressure 2 psi (13.8 KPa), 19.53 cm/s (30°C)

Oven program: 30°C (isothermal)

Detector: FID, 200°C



TKG 1013