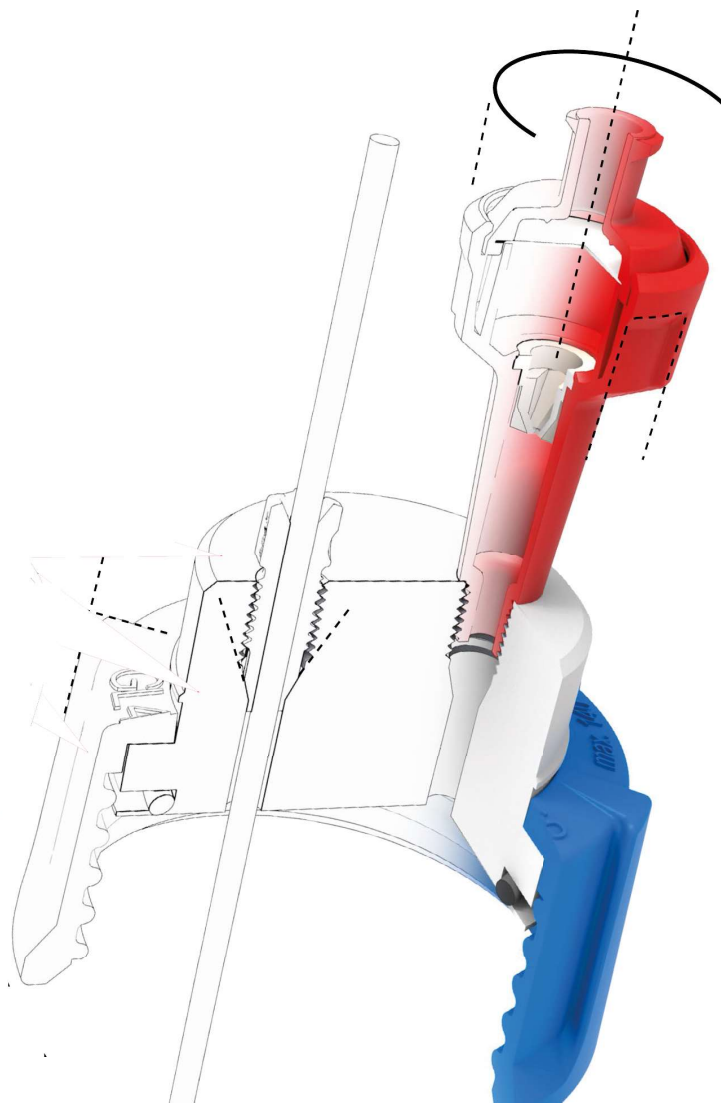


# HPLC Safety & Waste Caps



## Dangers and hazards in many laboratories



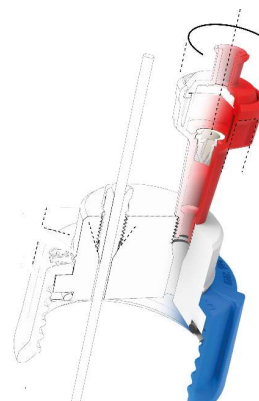
### Safety for HPLC users

Vapours and gases of dangerous liquids can cause damage to your health and to your environment. Bottles and containers with unsafe contents always have to be sealed reliably to avoid health hazards and environment pollution.

Many directives are already regulated by law - in addition, you should always take care of your health and integrity yourself.

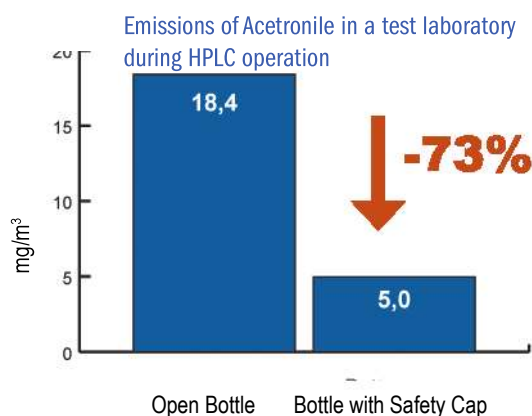
### Troubleshooting by SCAT Safety Caps

- **No escape of hazardous vapours**  
Integrated air valve and exhaust filters keep your containers sealed safely.
- **No pollution**  
Containers always remain shut, even during extraction or filling of liquids.
- **No shift of tubing**  
Tubes remain fixed - no air intake into sensitive equipment like chromatography systems
- **Easy container exchange**  
Safety Caps are freely turnable without twisting tubes.
- **No air intake**  
No interruption of chromatography processes.



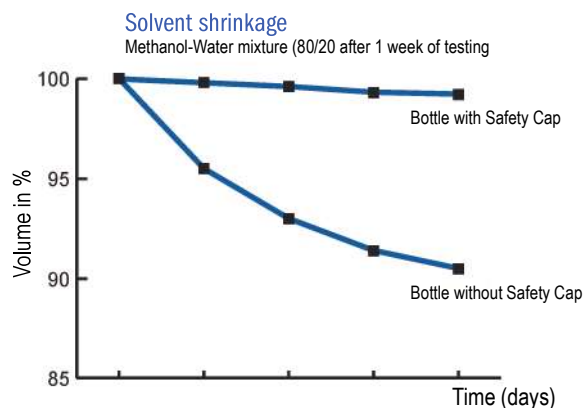
### Reduce pollution

Ecological and sanitary damage can be reduced intensely by SCAT Safety Caps. Officially accredited testing laboratories verify a reduction of toxic concentrations in the air amounting to 73%.



### Avoid shrinkage

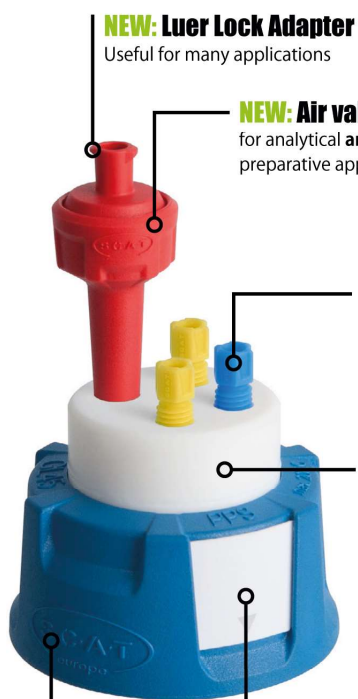
Spend less money on chemicals - SCAT Safety Caps avoid decrease of expensive solvents which otherwise evaporate into extraction hoods or into the environmental air.



# SafetyCaps 2.0

## The next Level!

**THE System**  
for Solvent Safety



**NEW: Luer Lock Adapter**

Useful for many applications

**NEW: Air valve**

for analytical and preparative applications



**NEW: PFA Fittings**

Improved design for easy tubing connection  
Excellent chemical resistance  
Flammability classification V-0 (UL-94)

**NEW: Medical Grade PTFE**

Excellent resistance  
Food safe  
FDA conform  
Flammability classification V-0 (UL-94)

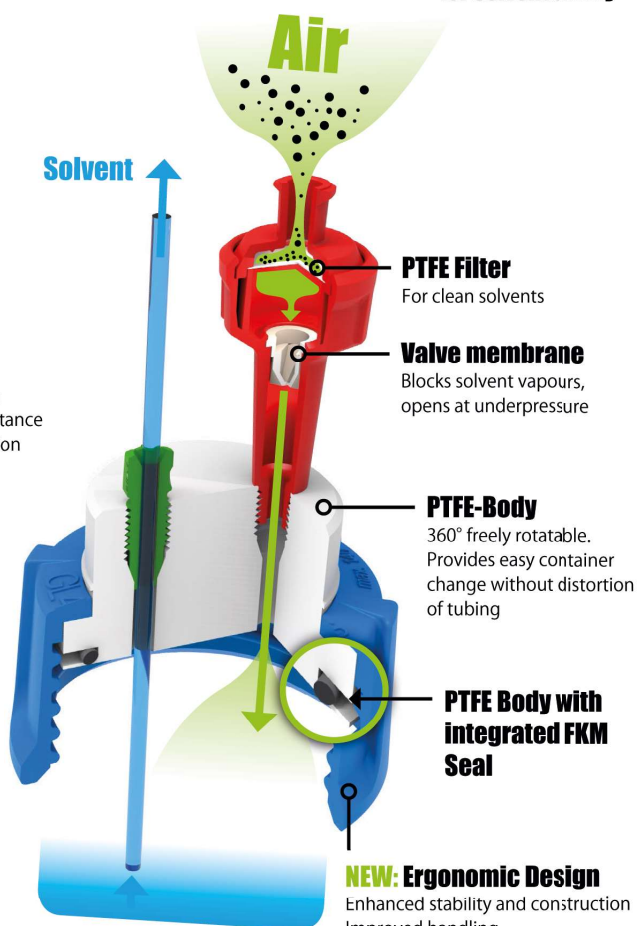
**NEW: Insertion Label**

Mark your bottles with individual descriptions



**NEW: PPS Screw Cap**

Autoclavable / sterilisable up to 200 °C  
Flammability classification V-0 (UL-94)



**PTFE Filter**

For clean solvents

**Valve membrane**

Blocks solvent vapours, opens at underpressure

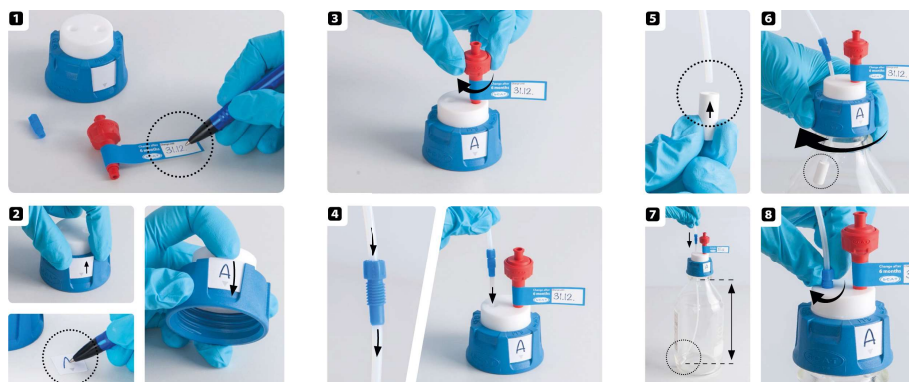
**PTFE-Body**

360° freely rotatable.  
Provides easy container change without distortion of tubing

**PTFE Body with integrated FKM Seal**

**NEW: Ergonomic Design**

Enhanced stability and construction  
Improved handling  
Easy installation  
Smart exchange



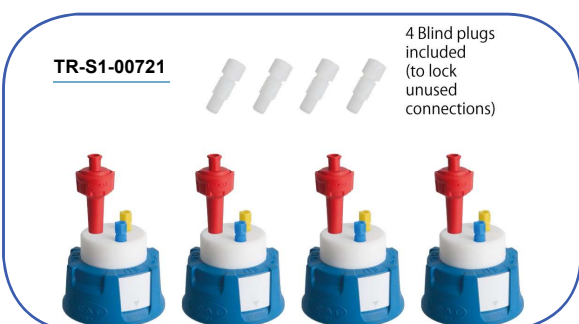
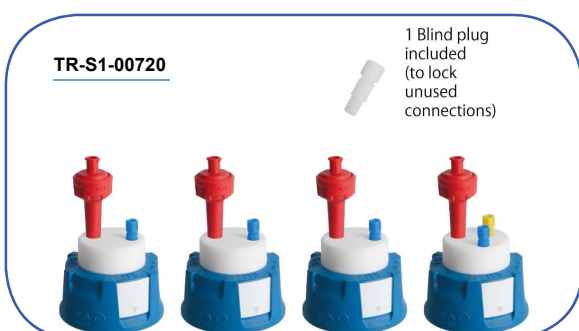


## Safety Caps GL 45 - Safe Fluid Supply

Safe venting for pressure equalization during the solvent supply by integrated air valve. Protection against dangerous solvent vapours.

### Available connectors for tubing:

- 1.6mm (1/16") OD
- 2.3mm OD
- 3.2mm (1/8") OD



| Cat.No      | Description   |
|-------------|---|
| TR-S1-00712 | Safety Cap I, (V2.0) GL 45<br>1 port for 3.2mm (1/8") OD tubing                   |
| TR-S1-00713 | Safety Cap II, (V2.0) GL 45<br>2 ports for 3.2mm (1/8") OD tubing 1x Blind plug   |
| TR-S1-00714 | Safety Cap III, (V2.0) GL 45<br>3 ports for 3.2mm (1/8") OD Tubing 2 x Blind Plug |
| TR-S1-00715 | Safety Cap IV, (V2.0) GL 45<br>4 ports for 3.2mm (1/8") OD Tubing 2 x Blind Plug  |
| TR-S1-00716 | Safety Cap V, (V2.0) GL 45<br>5 ports for 3.2mm (1/8") OD Tubing 2 x Blind Plug   |
| TR-S1-00715 | Safety Cap VI, (V2.0) GL 45<br>6 ports for 3.2mm (1/8") OD Tubing 2 x Blind Plug  |
| TR-S1-00717 | Air valve for SafetyCaps service life 6 months<br>(Box of 1)                      |
| TR-S1-00718 | Air valve for SafetyCaps service life 6 months<br>(Box of 10)                     |

## PFA fittings for capillaries

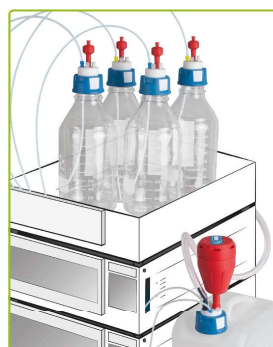
| Cat.No      | Description                     |
|-------------|---------------------------------|
| TR-S1-00157 | 5x Fitting for 3.2 mm OD Blue   |
| TR-S1-00156 | 5x Fitting for 3.2 mm OD Red    |
| TR-S1-00159 | 5x Fitting for 3.2 mm OD Yellow |
| TR-S1-00151 | 5x Fitting for 1.6 mm OD Green  |
| TR-S1-00154 | 5x Fitting for 2.3 mm OD Violet |
| TR-S1-00082 | 10 x Blind plug                 |

## Starter Kits

| Cat.No      | Description  |
|-------------|--|
| TR-S1-00720 | Starter Kit Supply S1<br>content: SafetyCapI 3 u GL45 1 connector 3,2mm OD<br>Safetycap II 1 unit GL45 2 connectors 3,2 mm OD<br>Blind plug for tubing connection 1/4"   |
| TR-S1-00721 | Starter Kit Supply S2<br>content: SafetyCapI 3 u GL45 1 connector 3,2mm OD<br>Safetycap II 1 unit GL45 2 connectors 3,2 mm OD<br>Blind plug for tubing connection 1/4"   |
| TR-S1-00255 | HPLC Safety Set<br>Content: 4 x Safety Cap III TR-S1-00714;<br>1x safetywaste Cap TR-S1-00728 4 connectors<br>1 x Filter Exhaust with indicatoir TR-S1-00724<br>2x Tube connector 6-8 mm TR-S1-00587<br>1 x tube connector 9.5-10 Angled TR-S1-00580 |

## Thread adapters for SafetyCaps

| Cat.No      | Description                    |
|-------------|--------------------------------|
| TR-S1-00233 | Adapter GL 38 (f) to GL 45 (m) |
| TR-S1-00235 | Adapter GL 40 (f) to GL 45 (m) |



TR-S1-00255



### Bottles (Clear Glass) - GL 45 Thread

Round bottles with scale (ml) and screw cap.

**Also available with protective covering!**

| Cat.No      | Volume  | Cat.No. with protective Covering |
|-------------|---------|----------------------------------|
| TR-S1-00321 | 250 ml  | TR-S1-00322                      |
| TR-S1-00325 | 500 ml  | TR-S1-00326                      |
| TR-S1-00315 | 1000 ml | TR-S1-00313                      |
| TR-S1-00319 | 2000 ml | TR-S1-00318                      |
| TR-S1-00328 | 5000 ml | TR-S1-00329                      |

### Bottles (Brown Glass) - GL 45 Thread

Round bottles (brown glass) with scale (ml) and screw cap.

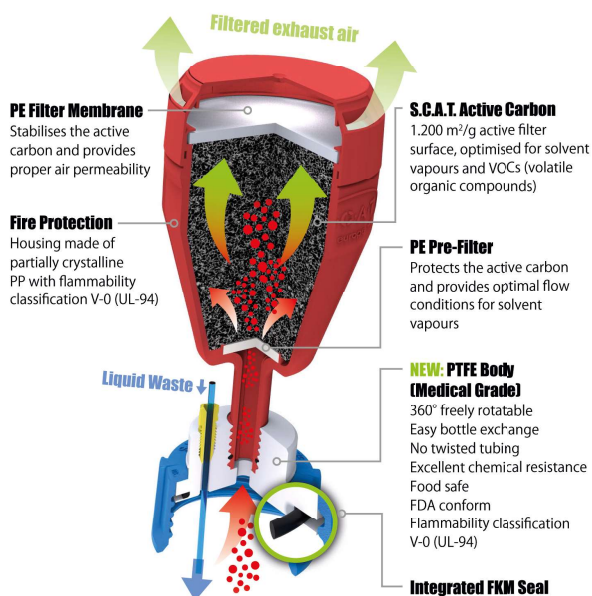
| Cat.No      | Volume  |
|-------------|---------|
| TR-S1-00320 | 250 ml  |
| TR-S1-00324 | 500 ml  |
| TR-S1-00314 | 1000 ml |

### Square Bottles (Clear Glass) - GL 45 Thread

Four-cornered bottles for space saving placement. Each bottle with scale (ml) and screw cap.

| Cat.No      | Volume  |
|-------------|---------|
| TR-S1-00323 | 250 ml  |
| TR-S1-00327 | 500 ml  |
| TR-S1-00316 | 1000 ml |

## Safe Liquid Waste Collection



TR-S1-00722



TR-S1-00723



TR-S1-00724



TR-S1-00725





## SafetyWaste Caps

our exhaust filter system absorbs 99% of all volatile substances evaporating from solvent disposal containers.

### Available connectors for tubing:

- 1.6mm (1/16") OD
- 2.3mm OD
- 3.2mm (1/8") OD

| Cat.No      | Description   |
|-------------|---|
| TR-S1-00726 | SafetyWaste Cap, GL 45<br>3 port for 3.2mm (1/8") OD tubing                         |
| TR-S1-00727 | SafetyWaste Cap, GL 45<br>2 ports for 3.2mm (1/8") OD tubing<br>1 port for 6-8 mm   |
| TR-S1-00728 | SafetyWaste Cap, GL 45<br>4 ports for 3.2mm (1/8") OD tubing<br>1 port for 6-8 mm   |
| TR-S1-00487 | SafetyWaste Cap, S 60/61<br>3 port for 3.2mm (1/8") OD tubing                       |
| TR-S1-00486 | SafetyWaste Cap, S 60/61<br>2 ports for 3.2mm (1/8") OD tubing<br>1 port for 6-8 mm |
| TR-S1-00544 | SafetyWaste Cap, S 90/91<br>4 ports for 3.2mm (1/8") OD tubing<br>1 port for 6-8 mm |
| TR-S1-00722 | Exhaust Filter, size M with splash protection and label                             |
| TR-S1-00723 | 2x Exhaust Filter, size M with splash protection and label                          |
| TR-S1-00724 | Exhaust Filter, size M with splash protection and change indicator                  |
| TR-S1-00725 | 2x Exhaust Filter, size M with splash protection and change indicator               |

| Cat.No      | Description  |
|-------------|--|
| TR-S1-00149 | Exhaust Filter, size S with splash protection and label    |
| TR-S1-00070 | 4x Exhaust Filter, size S with splash protection and label |



## SafetyWaste Caps with Safety Funnel

For safe disposal of solvent and sample leftovers. simply open the safety funnel by pressing the locking mechanism.

| Cat.No      | Description   |
|-------------|---|
| TR-S1-00460 | SafetyWaste Cap, S 50<br>2 port for 3.2mm (1/8") OD tubing with funnel    |
| TR-S1-00483 | SafetyWaste Cap, S 55<br>2 port for 3.2mm (1/8") OD tubing with funnel    |
| TR-S1-00504 | SafetyWaste Cap, S 60/61<br>2 port for 3.2mm (1/8") OD tubing with funnel |
| TR-S1-00500 | SafetyWasteCap S60/61, safety funnel with shut-off, 2 port 2,3/3,2 mm OD  |