

SAPIENS-1MS: Analysis chlorinated solvents and desifection by-products (EPA 551.1)

Column: SAPIENS-1MS P/N TR-431032

Dimensions: 30m x 0.25mm x 1.0 µm

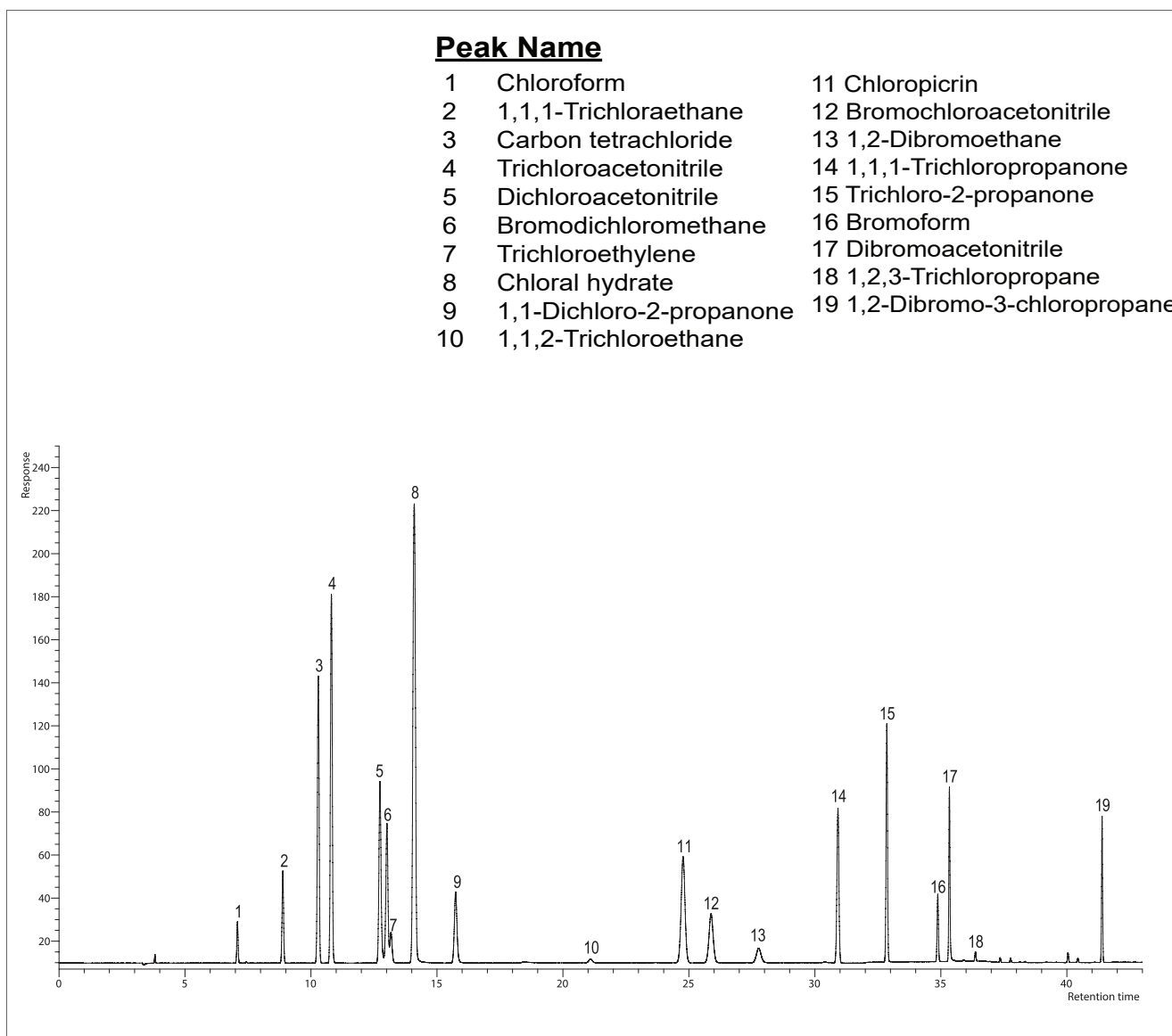
Injection: 0,01µL (50 ppb), Chlorinated Hydrocarbons mix, Split 100:1

Injector temperature: 200°C

Carrier gas: He Ct Flow, 0,9 ml/min

Oven temperature: 33°C (28 min) to 275°C (20 min) @ 10°C/min

Detector: ECD, 300°C



Chlorinated Hydrocarbons mix